

Matrikon Inc.
10405 Jasper Avenue
Suite 1800
Edmonton, AB T5J 3N4
Canada

Phone
780-448-1010

Fax
780-448-9191

Web
www.matrikon.com

CANADA
Edmonton, Alberta
Calgary, Alberta
Fort McMurray, Alberta
Vancouver, British Columbia
Toronto, Ontario
Quebec City, Quebec

AUSTRALIA
Newcastle, New South Wales
Brisbane, Queensland
Gladstone, Queensland
Melbourne, Victoria
Perth, Western Australia

USA
St. Louis, Missouri
Houston, Texas
New York, New York

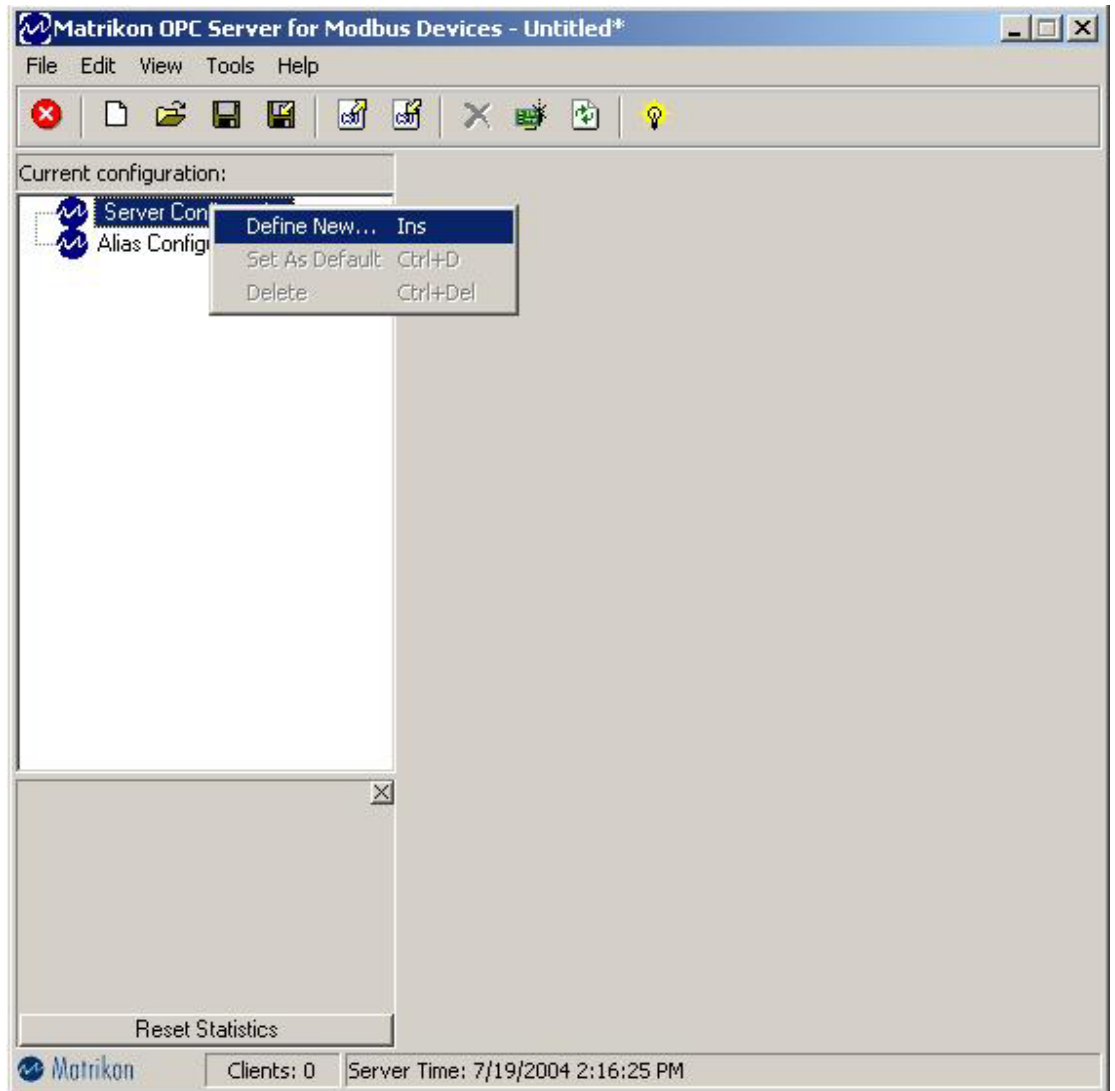
EUROPE
Aberdeen, Scotland

MIDDLE EAST
Al Khubar, Saudi Arabia

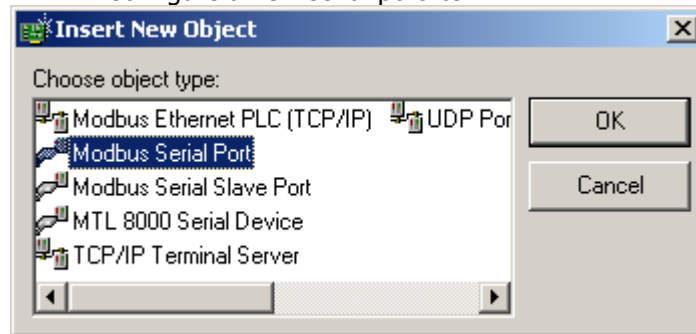
OPC Modbus Serial Configuration

NOTE: These directions will setup a Modbus Serial Port.

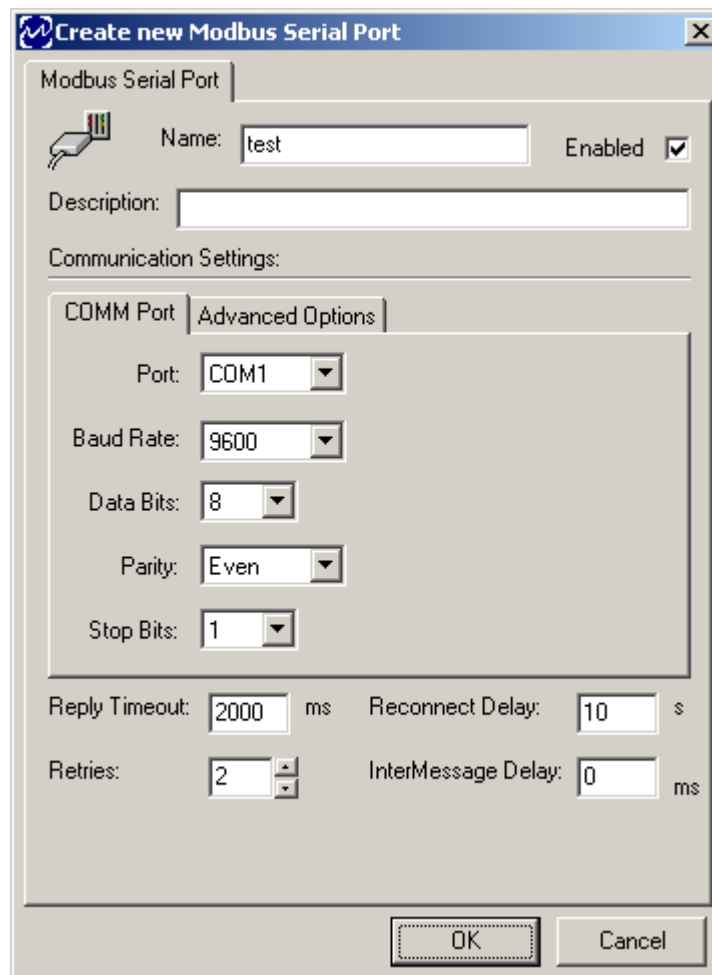
1. In the Modbus Server Configuration Window, Right-Click on 'Server Configuration' and click 'Define New'.



2. Configure a new serial port item.



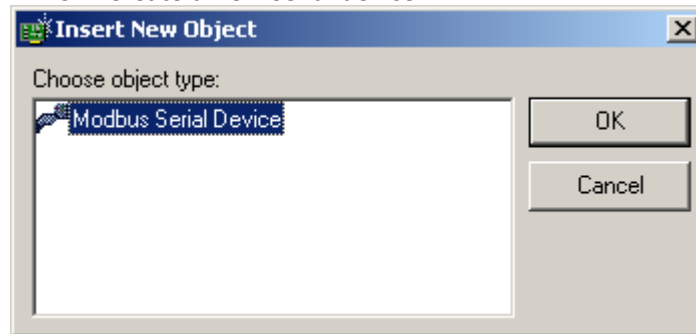
2) Set up the port, make sure that enabled is checked and that the serial settings are correct.



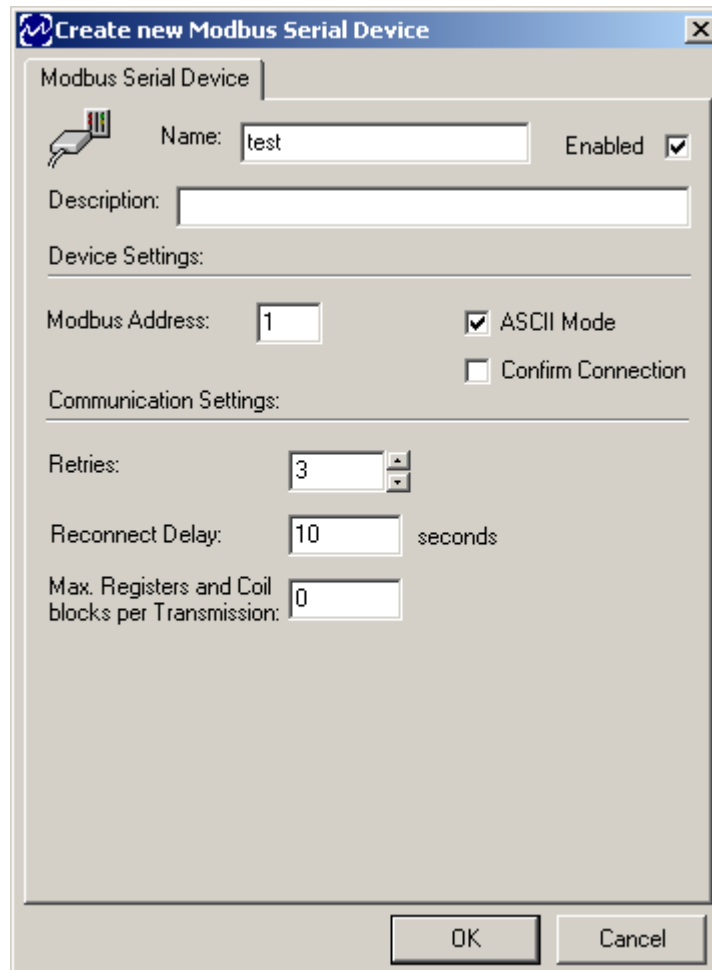
3. Click OK.

4. Right-Click on the new Modbus Serial device and "Define New".

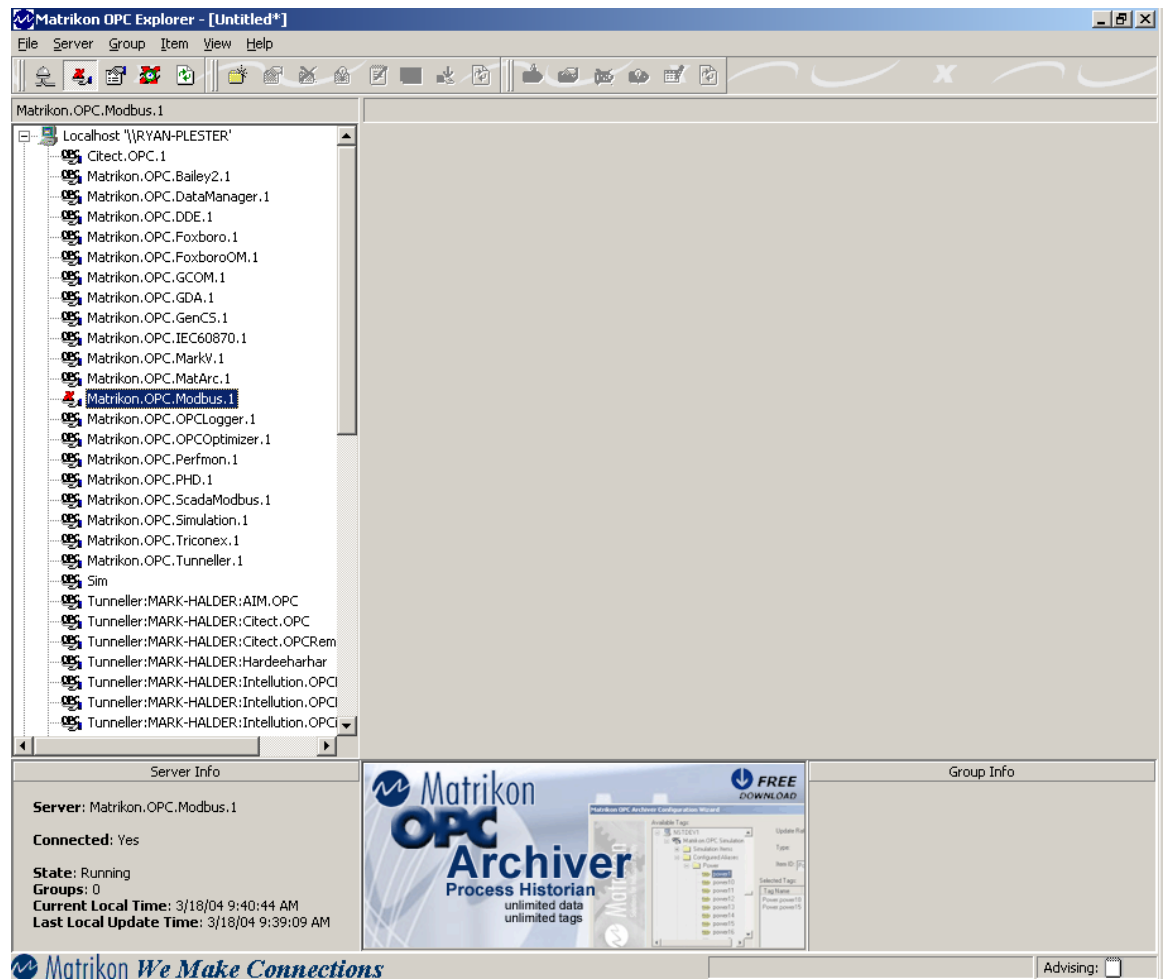
5. Create a new serial device.



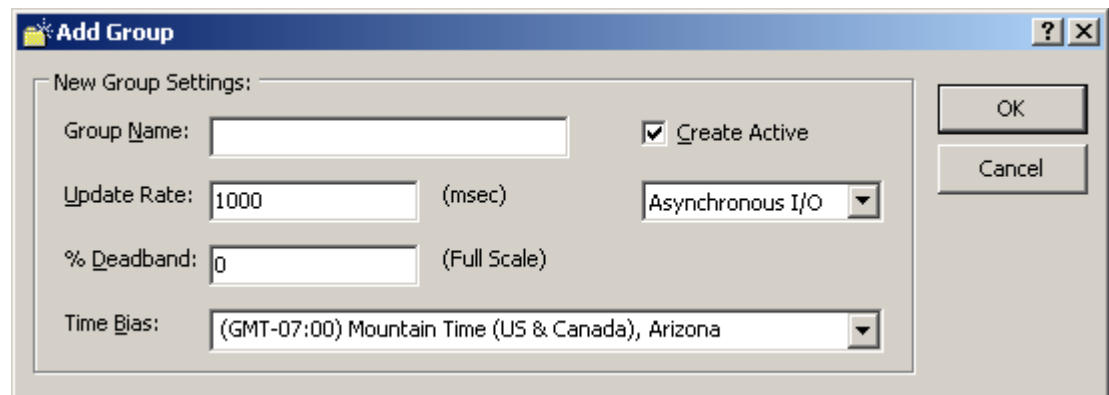
6. Set up your Serial Device and make sure that the enabled box is checked and that the settings are correct.



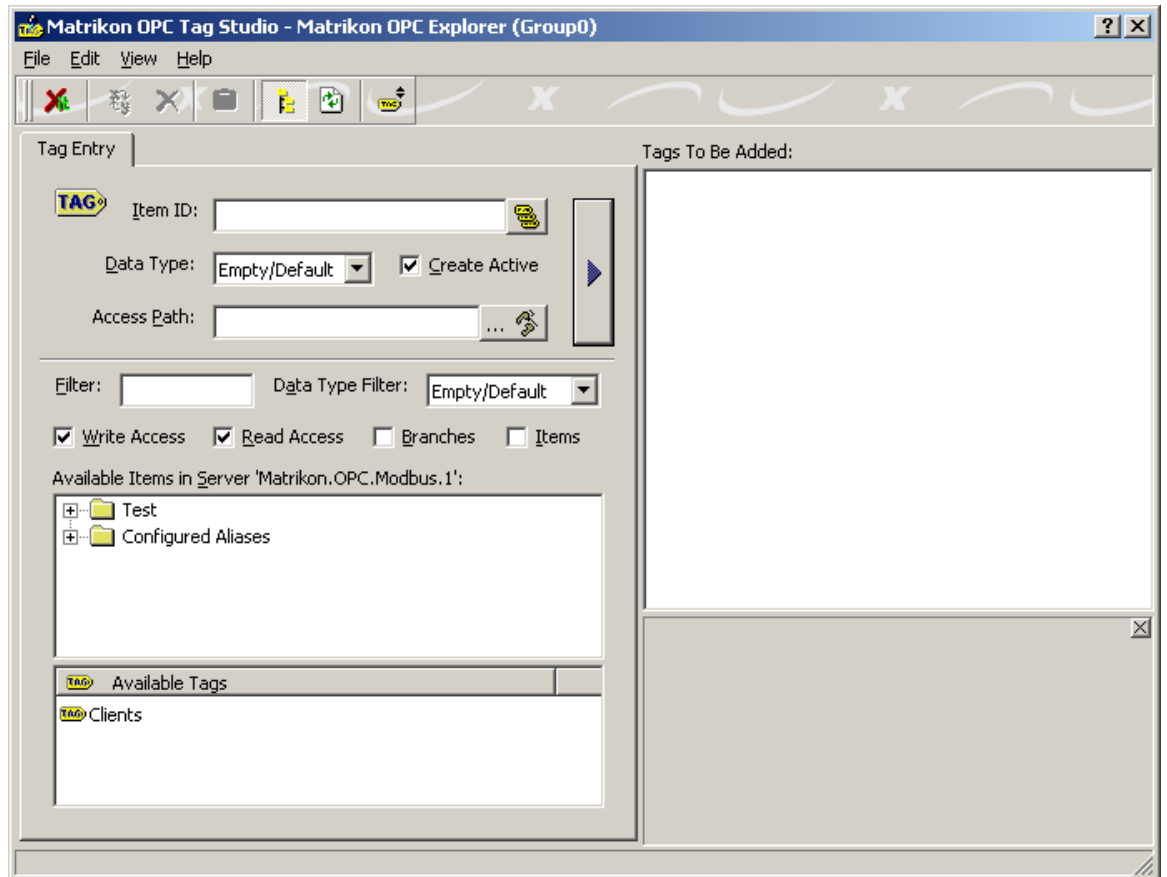
7. Open OPC Explorer and connect to the Matrikon.OPC.Modbus Server.



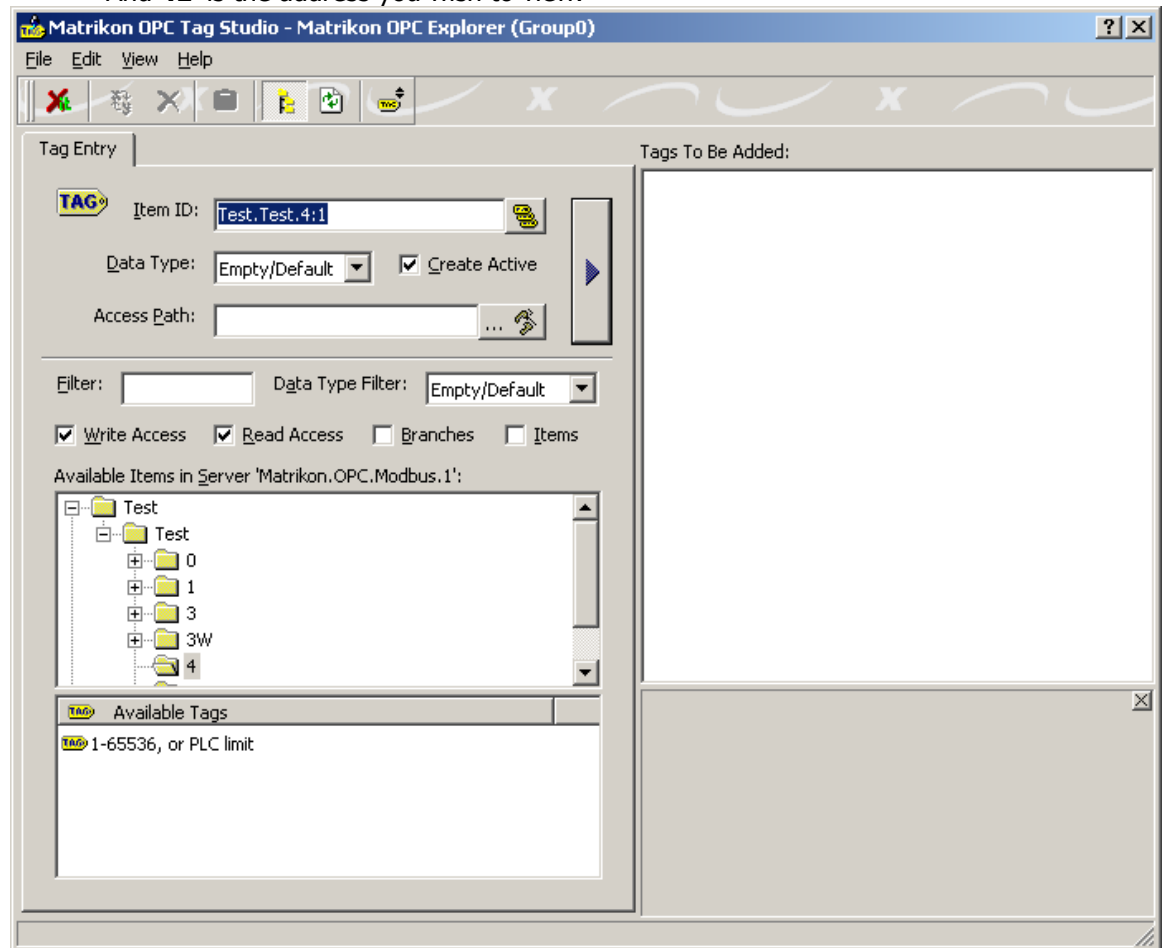
8. Right click on the server and select add group. There is no need to give the group a name, it will be given one automatically.



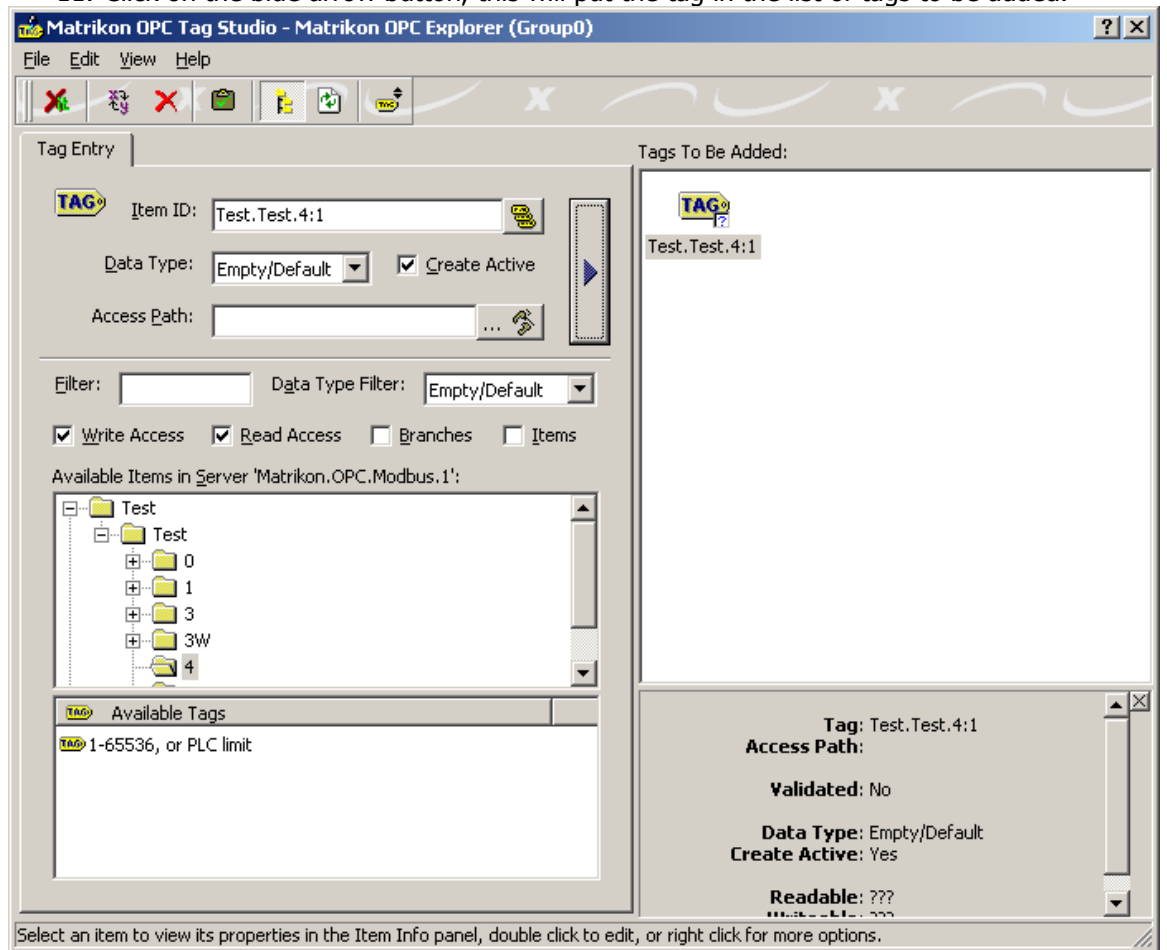
8) Right click on the group and select add items.



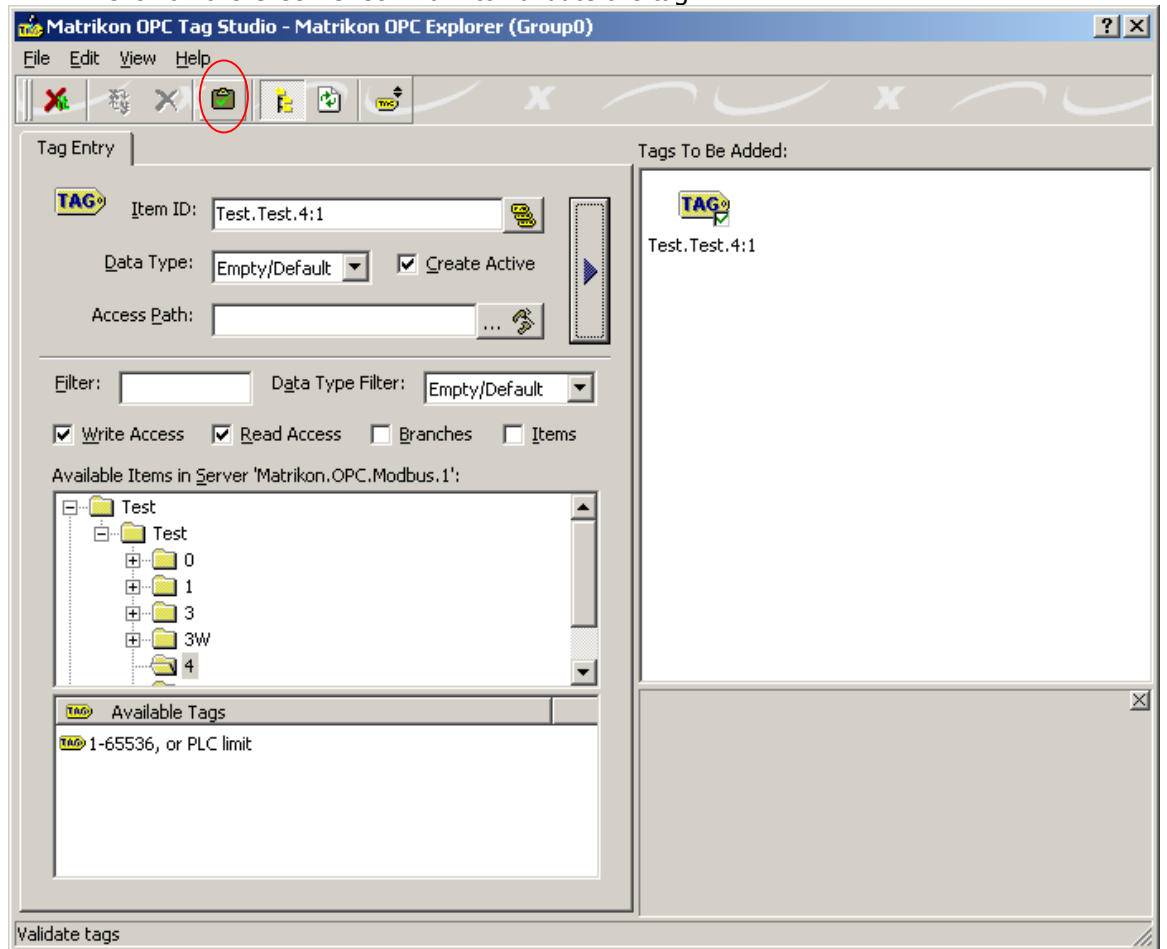
9. In the Item ID Box type in the point that you wish to read.
10. You will notice that if you browse to the tag names below that you get tags such as: 1-65536, or PLC Limit. These are what we call "Hint Tags" and show you the common syntax for Modbus Tags. Since Modbus is not able to browse until you add a successful tag, the hint syntax is as follows:
'Test.Test.4:1' where **Test.Test** is "**Serial Port Name**". "**Serial Device Name**",
4 is **40000** (can be replaced with 0, 1 or 3)
And **:1** is the address you wish to view.



11. Click on the blue arrow button, this will put the tag in the list of tags to be added.



12. Click on the Green Check Mark to validate the tag



13. Click on the red X to update and return to OPC Explorer.

Server Info

Server: Matrikon.OPC.Modbus.1

Connected: Yes

State: Running

Groups: 1

Current Local Time: 3/18/04 10:12:03 AM

Last Local Update Time: 3/18/04 10:11:52 AM

Group Info

Group: Group0

Connected (Async I/O): Yes (2.0)

Active: Yes

Items: 1

Current Update Rate: 1000 ms

Percent Deadband: 0.00%

Matrikon We Make Connections

Advising:

Item ID	Access	Value	Timestamp	Quality
Test.Test.4:1			3/18/04 10:11:51 AM	Bad, comm failure

14. Assuming that your syntax is correct for your device, and that you are connected to the Modbus device, you should now see values and a good quality from the server.

15. Our Screenshot shows a bad comm. Failure since we do not have a Modbus Device connected.

Your **Modbus Server** is now setup to send and receive data.