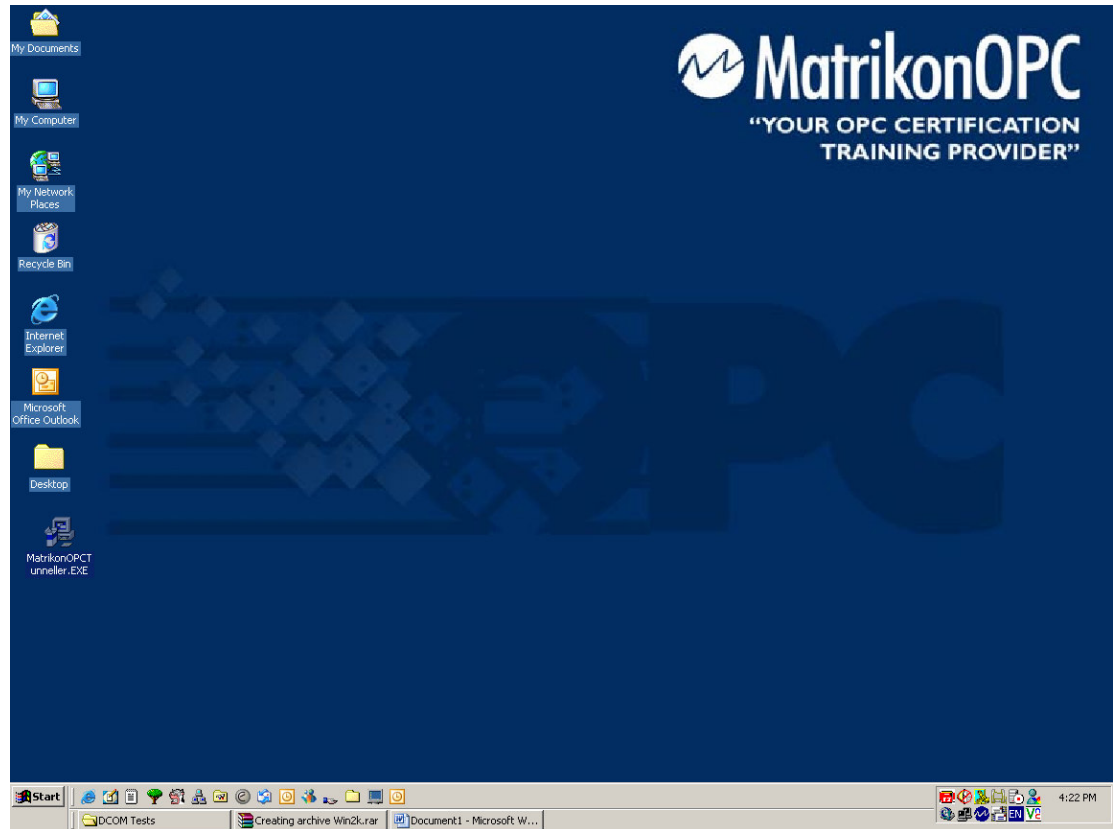


Installation and Configuration of OPC Tunneller Server Side Component July 5, 2006

This document details how to install and configure the Server Side Component of OPC Tunneller. This component should be installed on the same machine as your OPC Server.

1. Double click on your Tunneller install executable, or launch the Tunneller install from your CD.



CANADA
Edmonton, Alberta
Calgary, Alberta
Fort McMurray, Alberta
Vancouver, British Columbia
Toronto, Ontario
Quebec City, Quebec

AUSTRALIA
Newcastle, New South Wales
Brisbane, Queensland
Gladstone, Queensland
Melbourne, Victoria
Perth, Western Australia

USA
St. Louis, Missouri
Houston, Texas
New York, New York

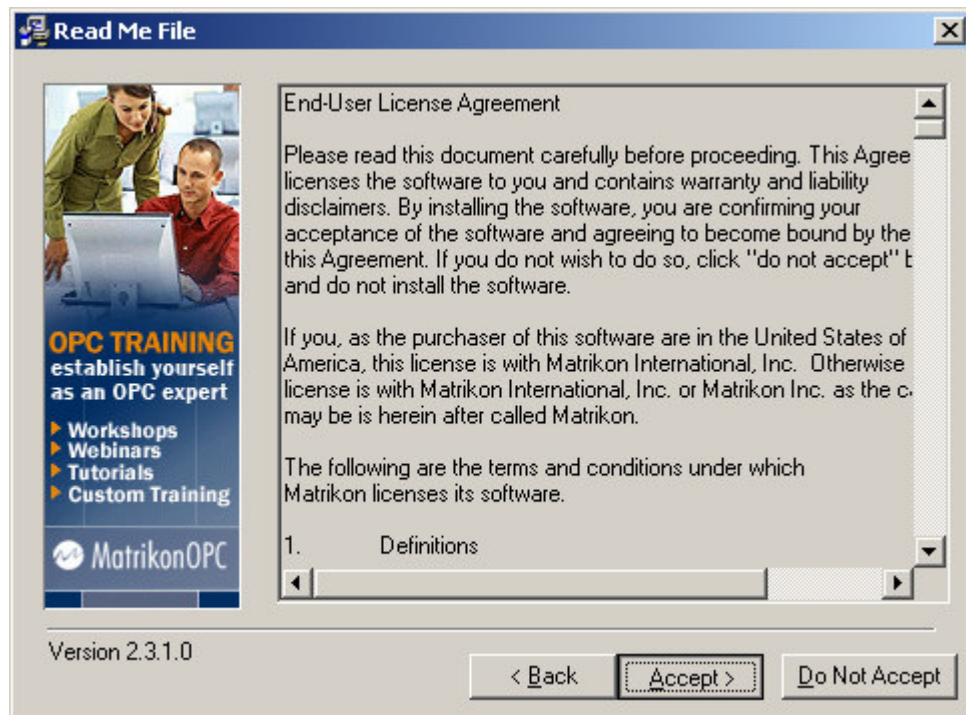
EUROPE
Aberdeen, Scotland

MIDDLE EAST
Al Khubar, Saudi Arabia

2. When presented with the Welcome screen, click Next.



3. Review the license agreement carefully, and click 'Accept'.



4. We recommend that you run the Typical install. Select 'Typical', and click 'Next'.

Select Installation Type

Select the installation type:

Typical: Will install all components in default folders

Custom: Pick and choose which components to install, along with folder and shortcut locations.

Version 2.3.1.0

< Back Next > Cancel

5. You will now be prompted for your registration information. Enter your company information – it will be used for licensing purposes. When you are finished, click 'Next'.

Registration Information

Name: Andrea Ongaro

Company: MatrikonOPC

Address: 10405 Jasper Avenue

City/Prov: Edmonton, AB

Country: Canada

Postal Code: T5J 3N4

Email Address *: Support@MatrikonOPC.com

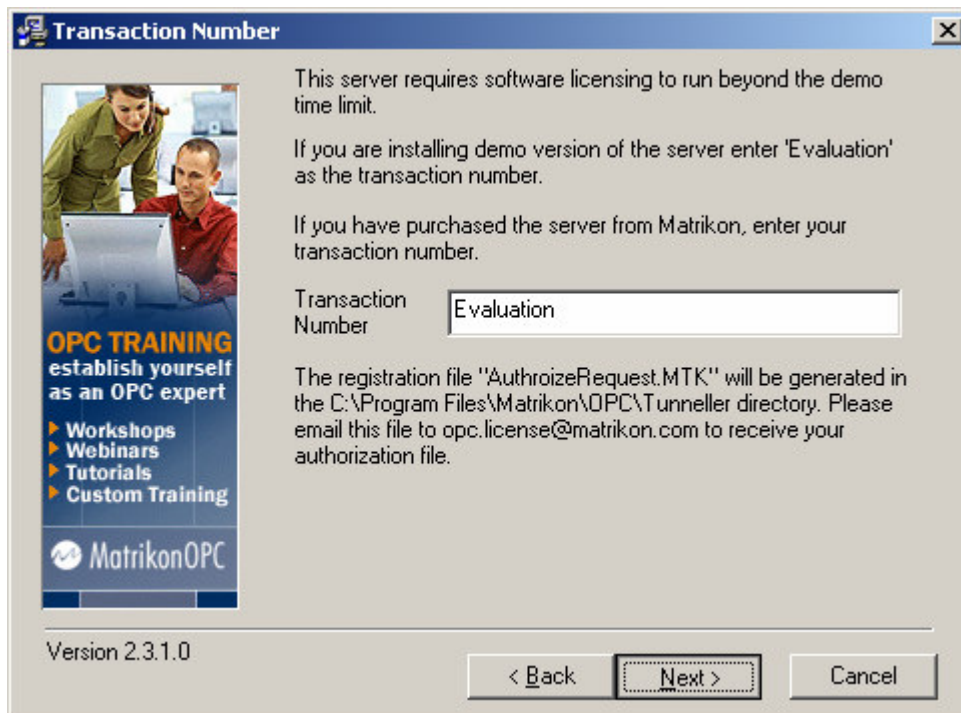
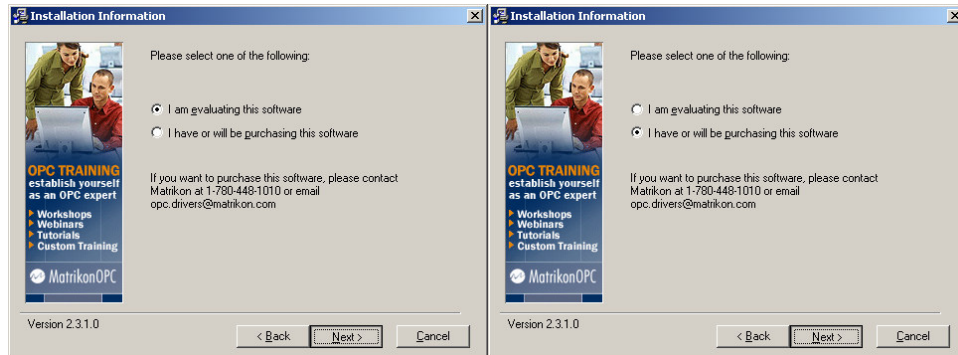
Phone Number: 780-945-4011

Computer Name: ANDREA-ONGARO

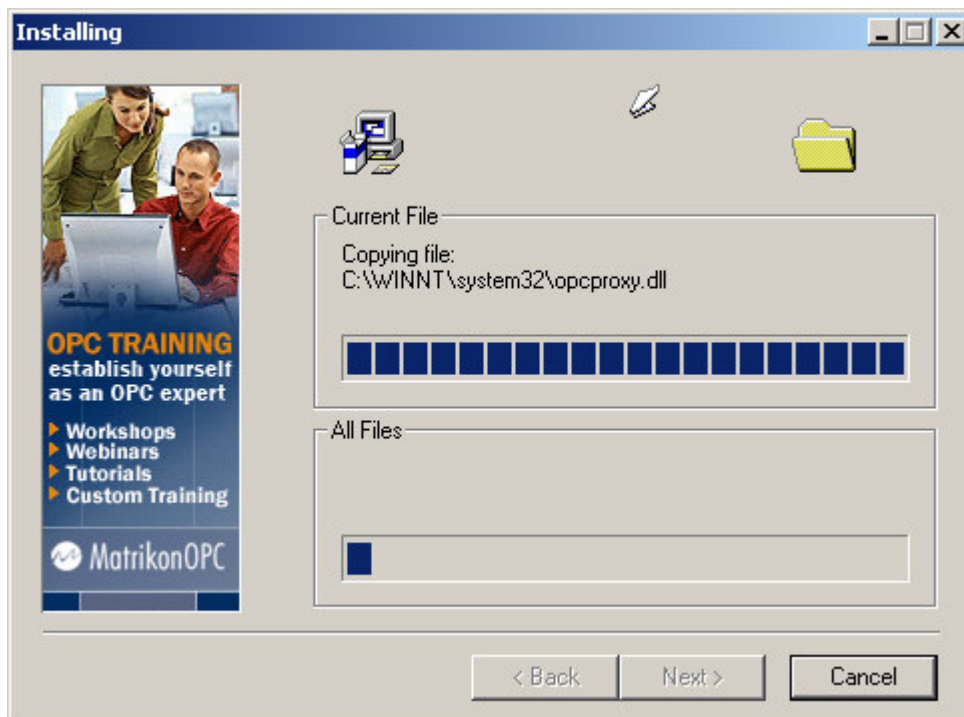
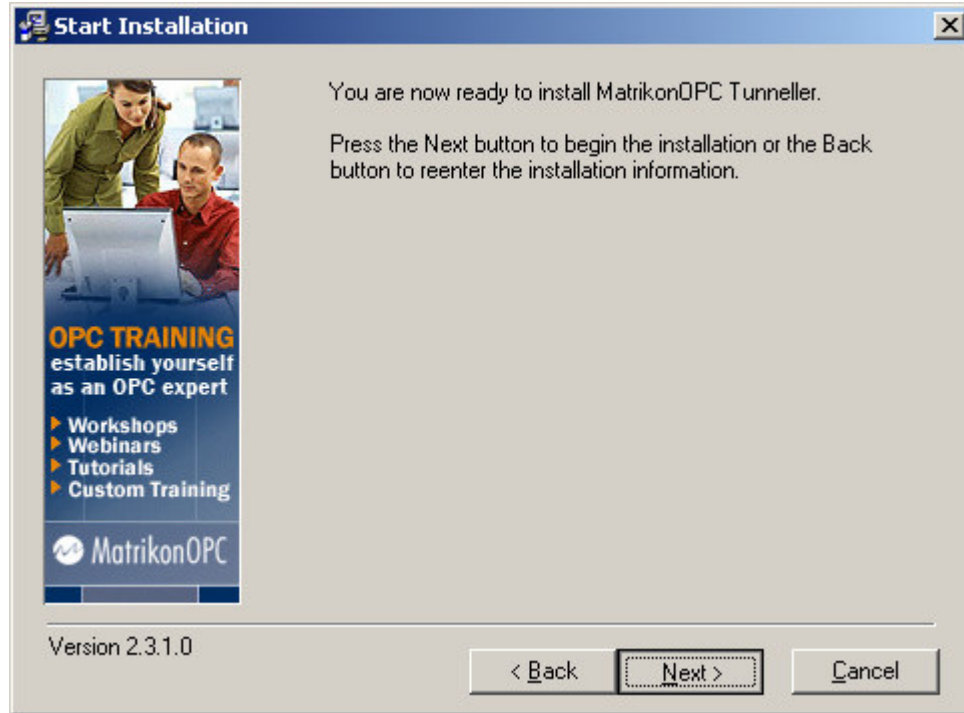
* Registration information will be sent to this address, please ensure that it is valid.

< Back Next > Cancel

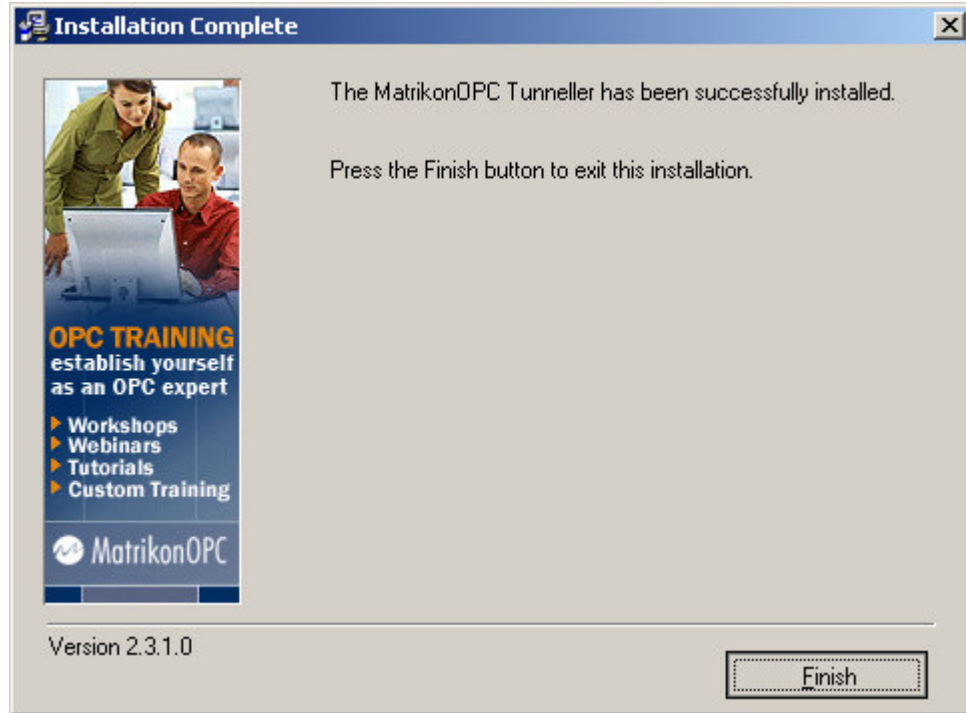
6. You will be presented with the option of either evaluating the software or licensing it permanently. If you choose 'I am evaluating this software' you will automatically receive a 30 day demo license. If you choose 'I have or will be purchasing this software' you will be prompted for your transaction number, as shown. Make your selection and click 'Next'.



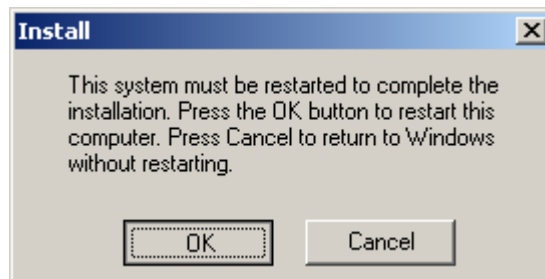
7. Click 'Next' to begin the installation.



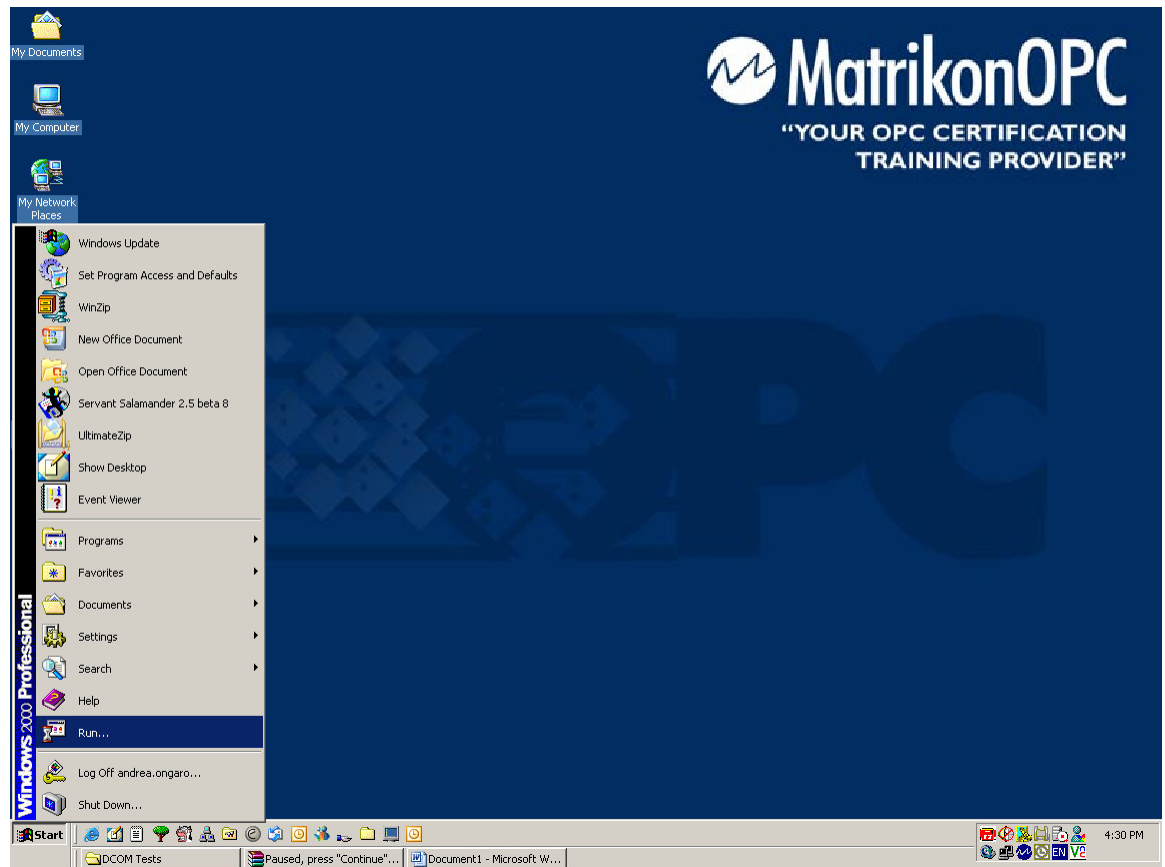
8. Tunneller has been installed on your system. Click 'Finish'.



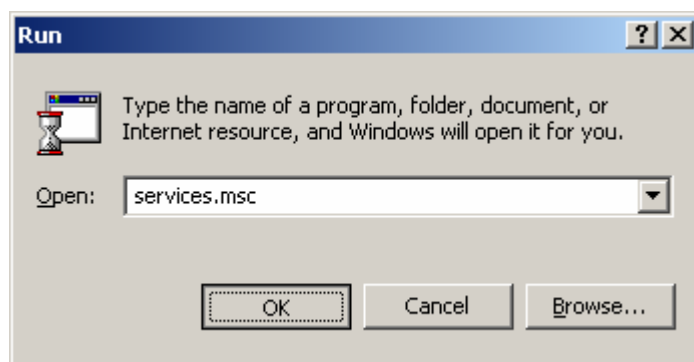
9. Click 'OK' to restart your system.



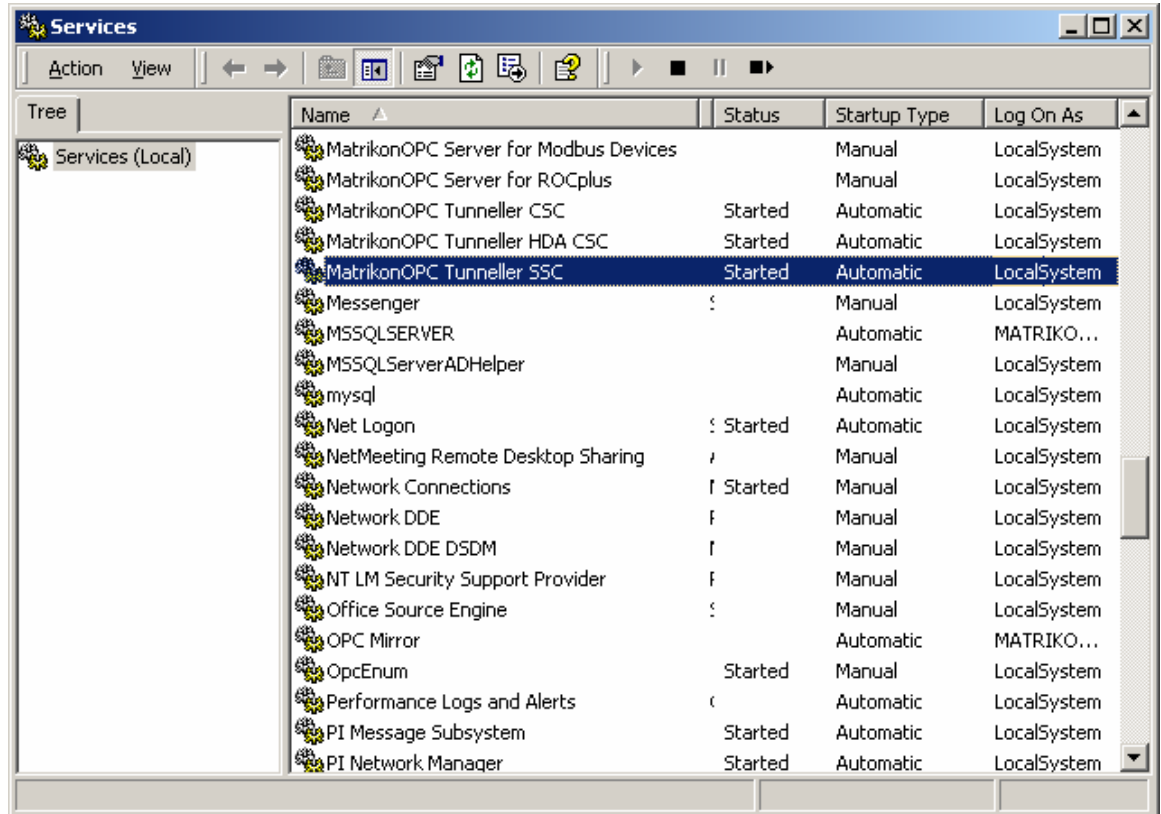
10. To check to ensure that the server side is running correctly, go to the 'Start->Run' prompt.



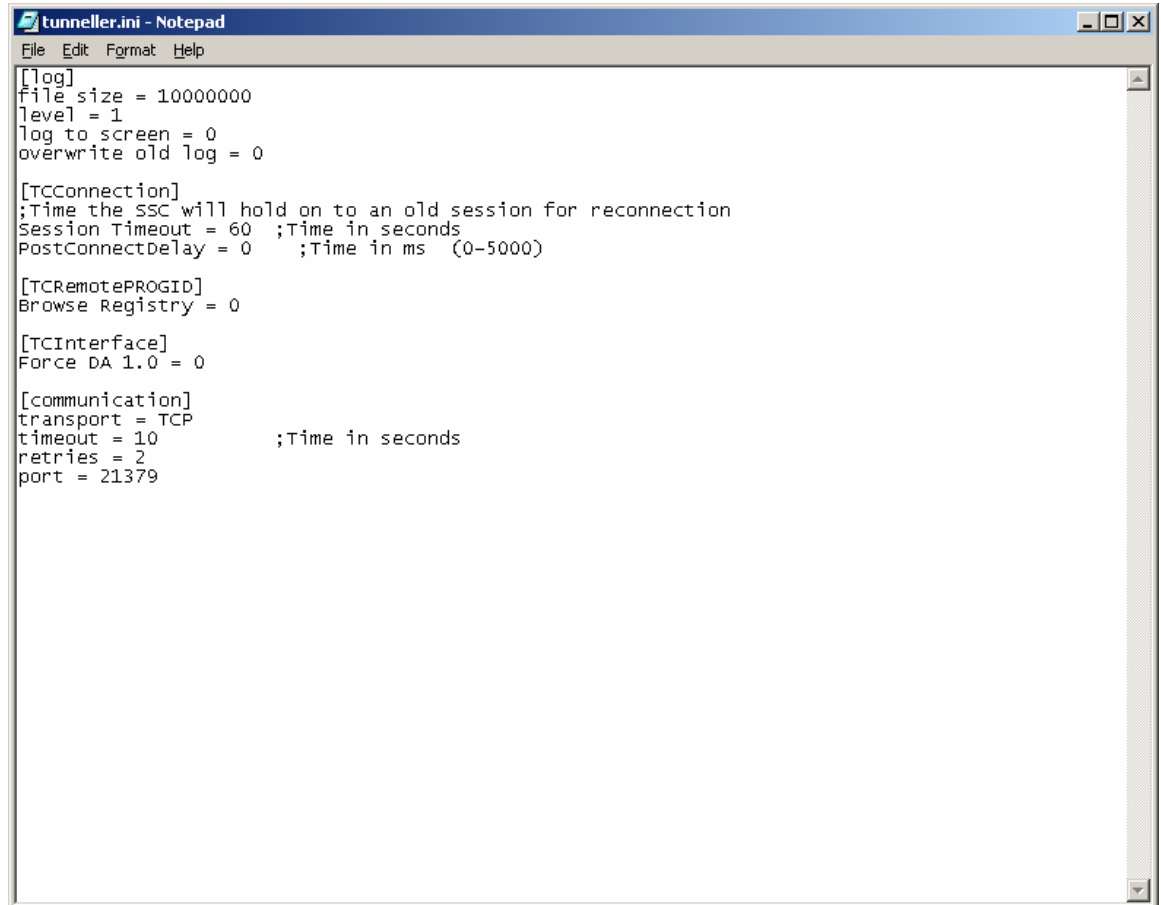
11. Type 'services.msc' and click OK.



12. If the service called 'MatrikonOPC Tunneller SSC' is Started, your server side component is configured.



13. For advanced configuration options such as log levels and TCP/IP port numbers, refer to C:\Program Files\Matrikon\OPC\Tunneller\Server-Side Component\tunneller.ini. After changing the settings be sure to save the file and restart the MatrikonOPC Tunneller SSC Service.



```
tunneller.ini - Notepad
File Edit Format Help
[log]
file size = 10000000
level = 1
log to screen = 0
overwrite old log = 0

[TCconnection]
;Time the SSC will hold on to an old session for reconnection
Session Timeout = 60 ;Time in seconds
PostConnectDelay = 0 ;Time in ms (0-5000)

[TCRemotePROGID]
Browse Registry = 0

[TCInterface]
Force DA 1.0 = 0

[communication]
transport = TCP
timeout = 10 ;Time in seconds
retries = 2
port = 21379
```