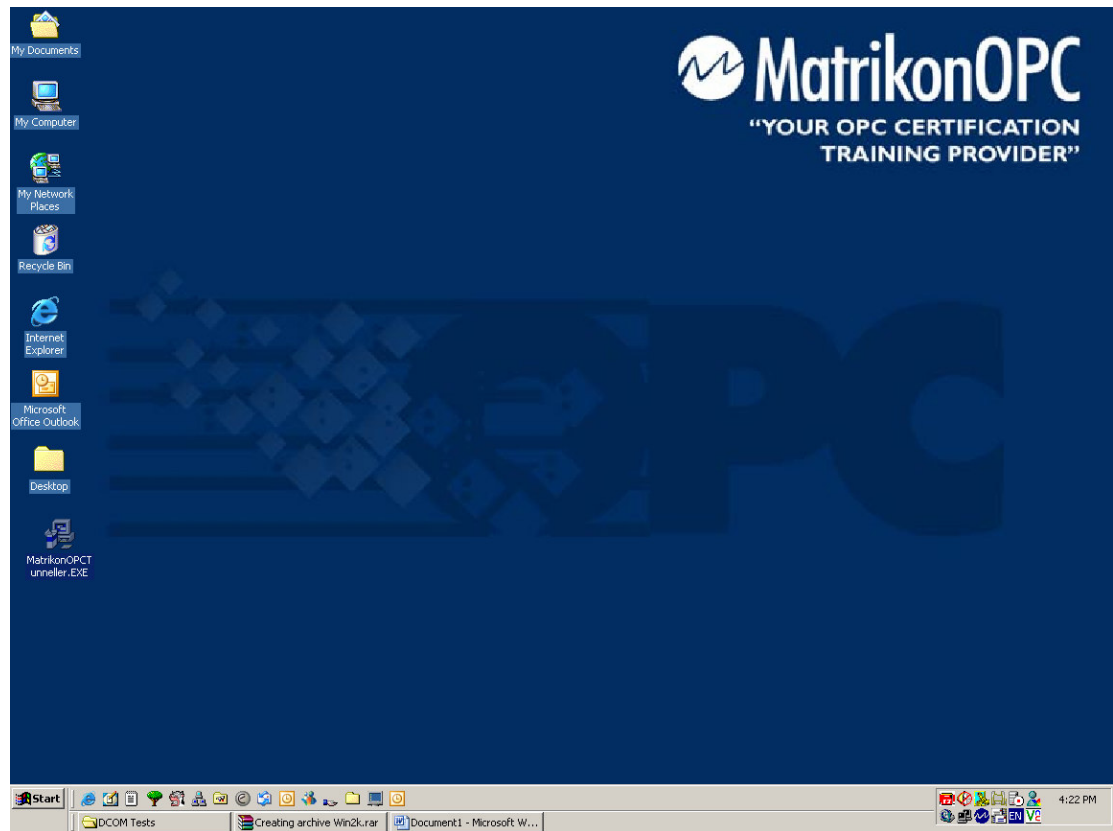


# Installation and Configuration of OPC Tunneller Client Side Component

July 5, 2006

This document details how to install and configure the Client Side Component of OPC Tunneller. This component should be installed on the same machine as your OPC Client.

1. Double click on your Tunneller install executable, or launch the Tunneller install from your CD.



CANADA  
Edmonton, Alberta  
Calgary, Alberta  
Fort McMurray, Alberta  
Vancouver, British Columbia  
Toronto, Ontario  
Quebec City, Quebec

AUSTRALIA  
Newcastle, New South Wales  
Brisbane, Queensland  
Gladstone, Queensland  
Melbourne, Victoria  
Perth, Western Australia

USA  
St. Louis, Missouri  
Houston, Texas  
New York, New York

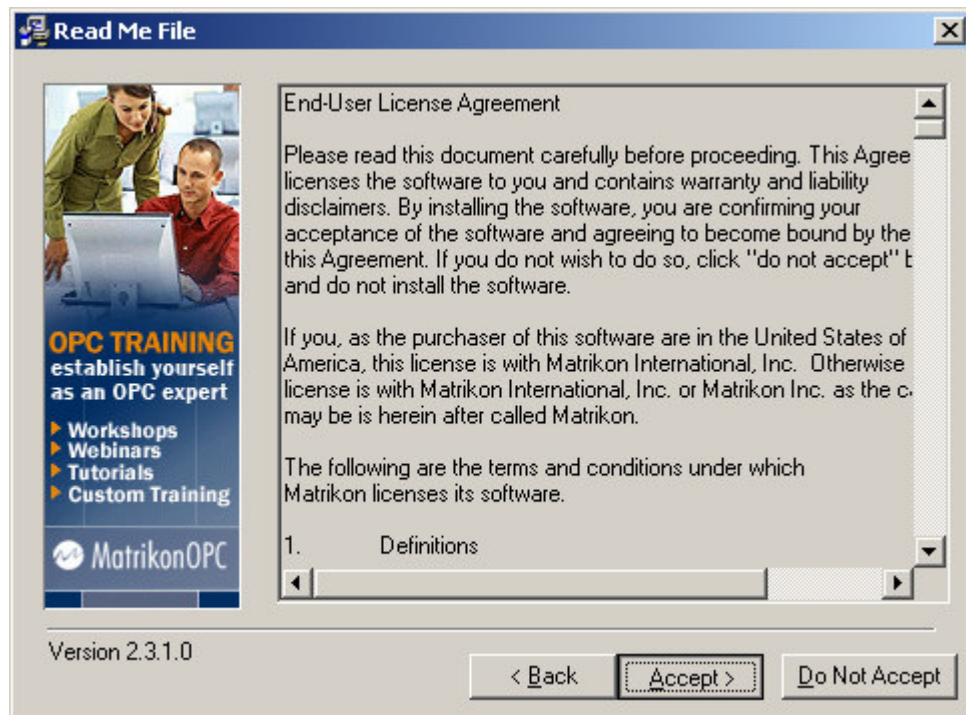
EUROPE  
Aberdeen, Scotland

MIDDLE EAST  
Al Khubar, Saudi Arabia

2. When presented with the Welcome screen, click Next.



3. Review the license agreement carefully, and click 'Accept'.



4. We recommend that you run the Typical install. Select 'Typical', and click 'Next'.

Select Installation Type

Select the installation type:

Typical: Will install all components in default folders

Custom: Pick and choose which components to install, along with folder and shortcut locations.

Version 2.3.1.0

< Back   Next >   Cancel

5. You will now be prompted for your registration information. Enter your company information – it will be used for licensing purposes. When you are finished, click 'Next'.

Registration Information

Name: Andrea Ongaro

Company: MatrikonOPC

Address: 10405 Jasper Avenue

City/Prov: Edmonton, AB

Country: Canada

Postal Code: T5J 3N4

Email Address \*: Support@MatrikonOPC.com

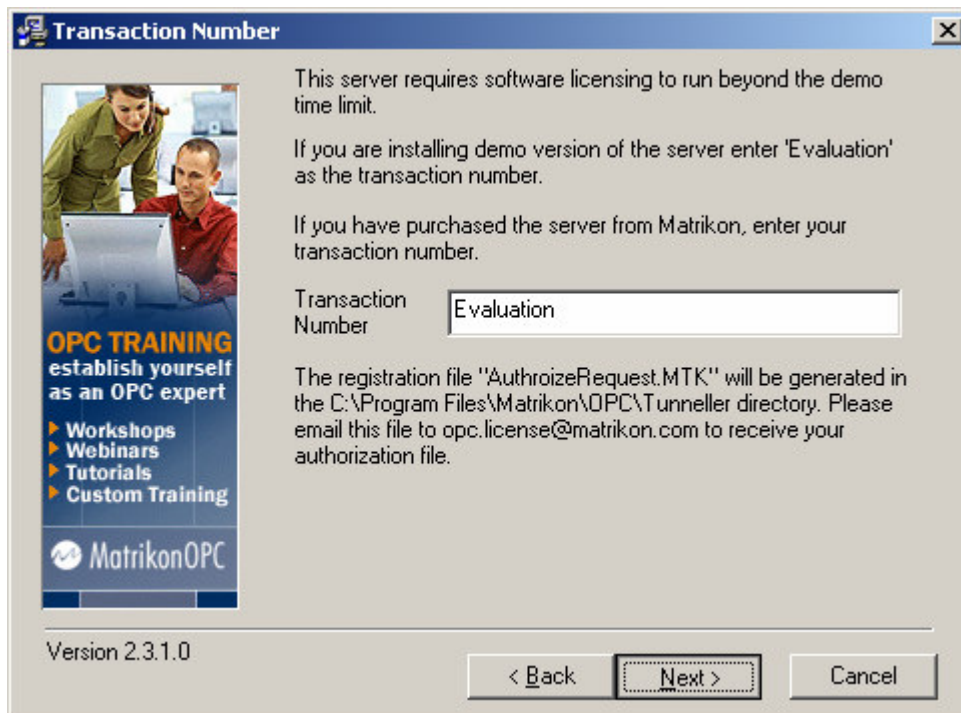
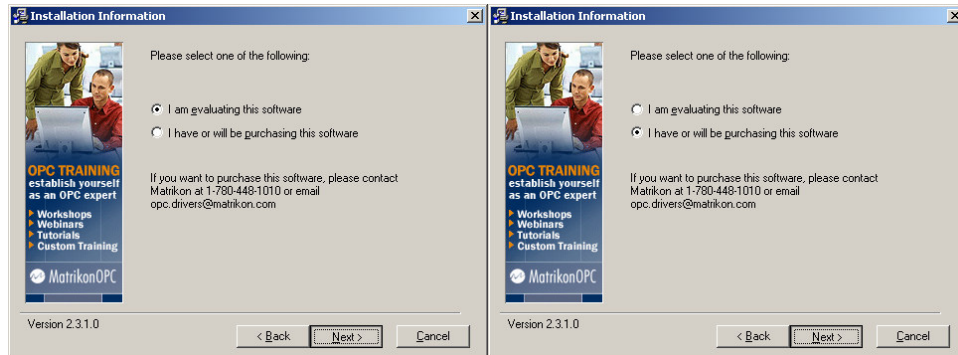
Phone Number: 780-945-4011

Computer Name: ANDREA-ONGARO

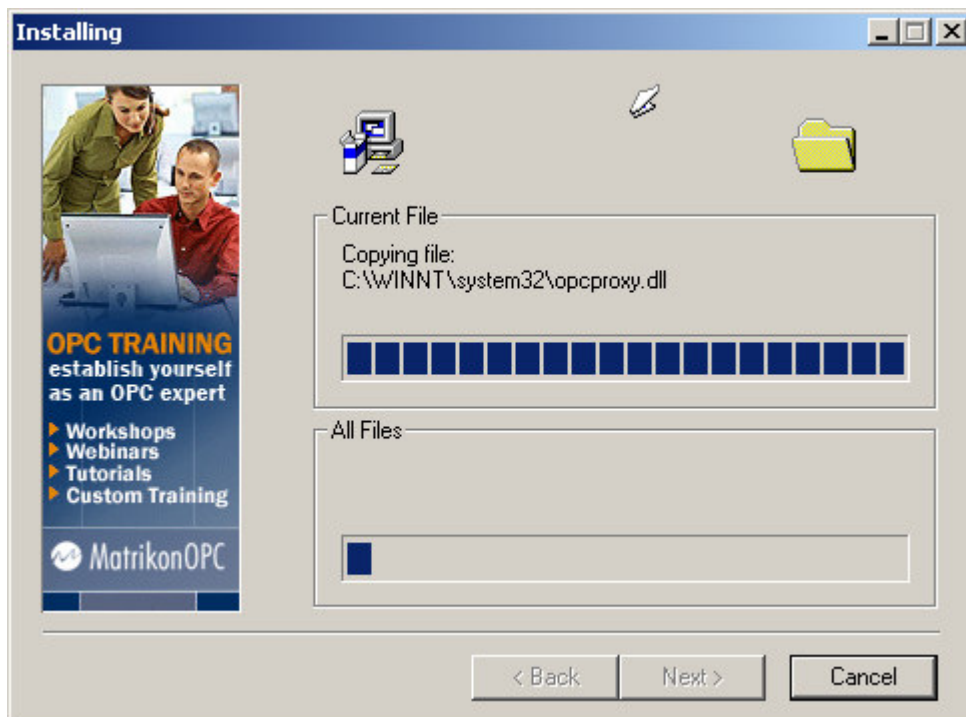
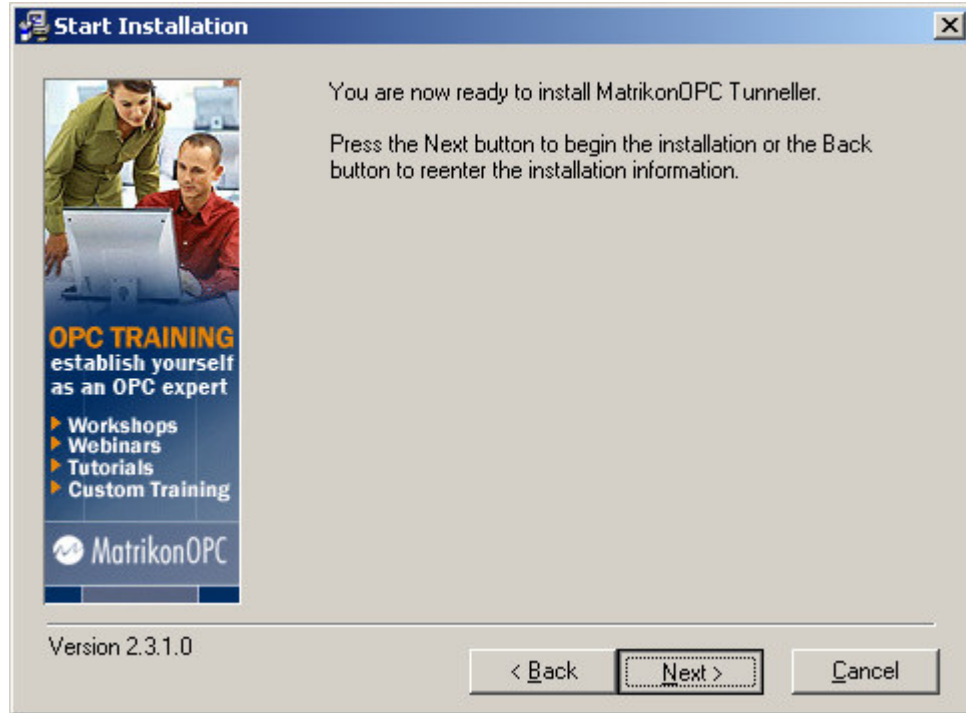
\* Registration information will be sent to this address, please ensure that it is valid.

< Back   Next >   Cancel

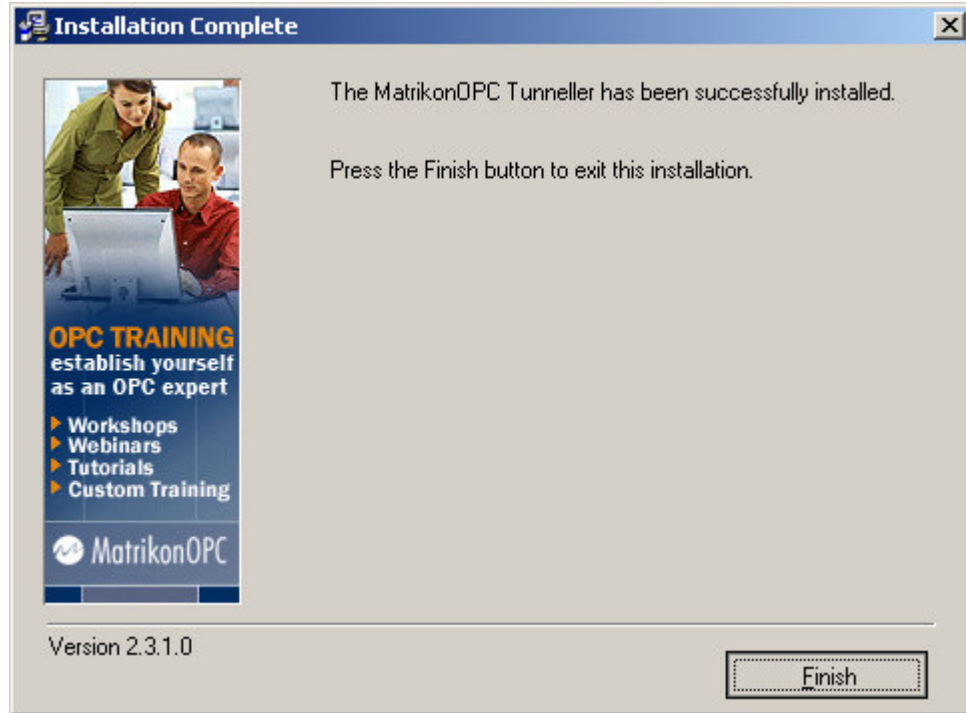
6. You will be presented with the option of either evaluating the software or licensing it permanently. If you choose 'I am evaluating this software' you will automatically receive a 30 day demo license. If you choose 'I have or will be purchasing this software' you will be prompted for your transaction number, as shown. Make your selection and click 'Next'.



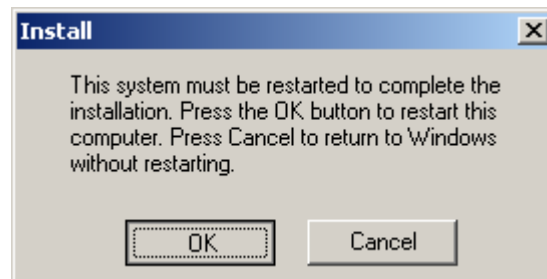
7. Click 'Next' to begin the installation.



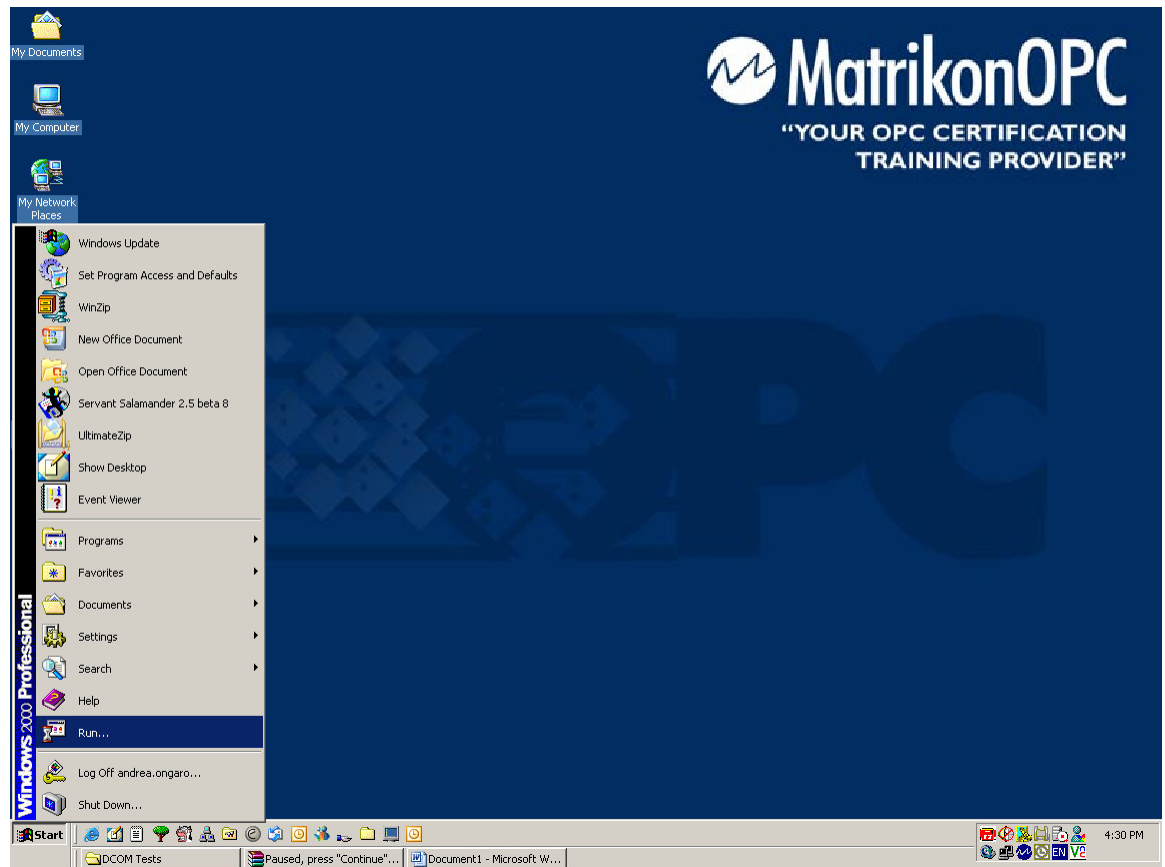
8. Tunneller has been installed on your system. Click 'Finish'.



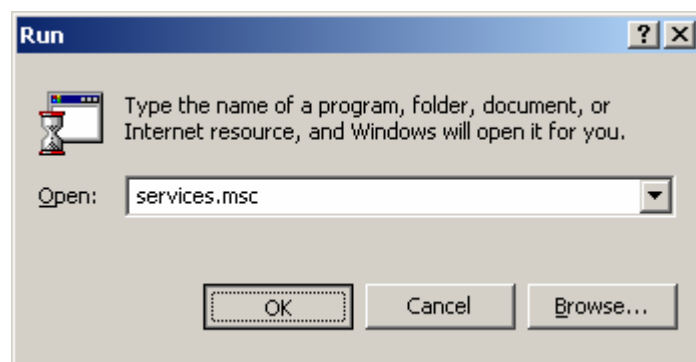
9. Click 'OK' to restart your system.



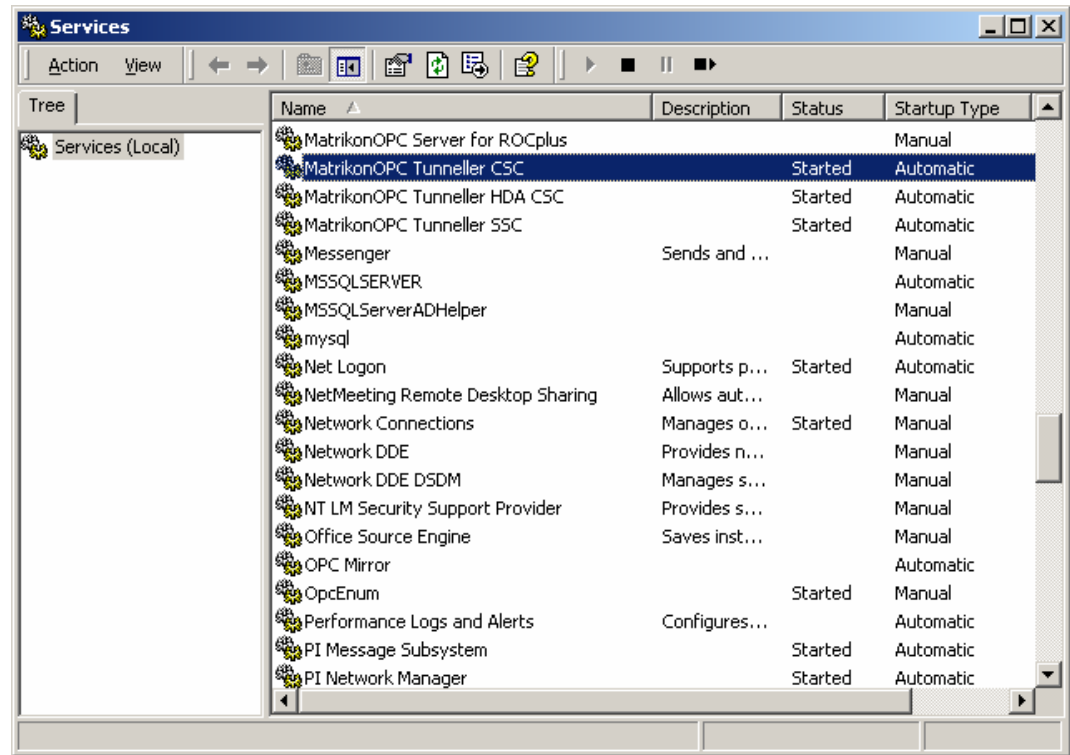
10. To check to ensure that the client side is running correctly, go to the 'Start->Run' prompt.



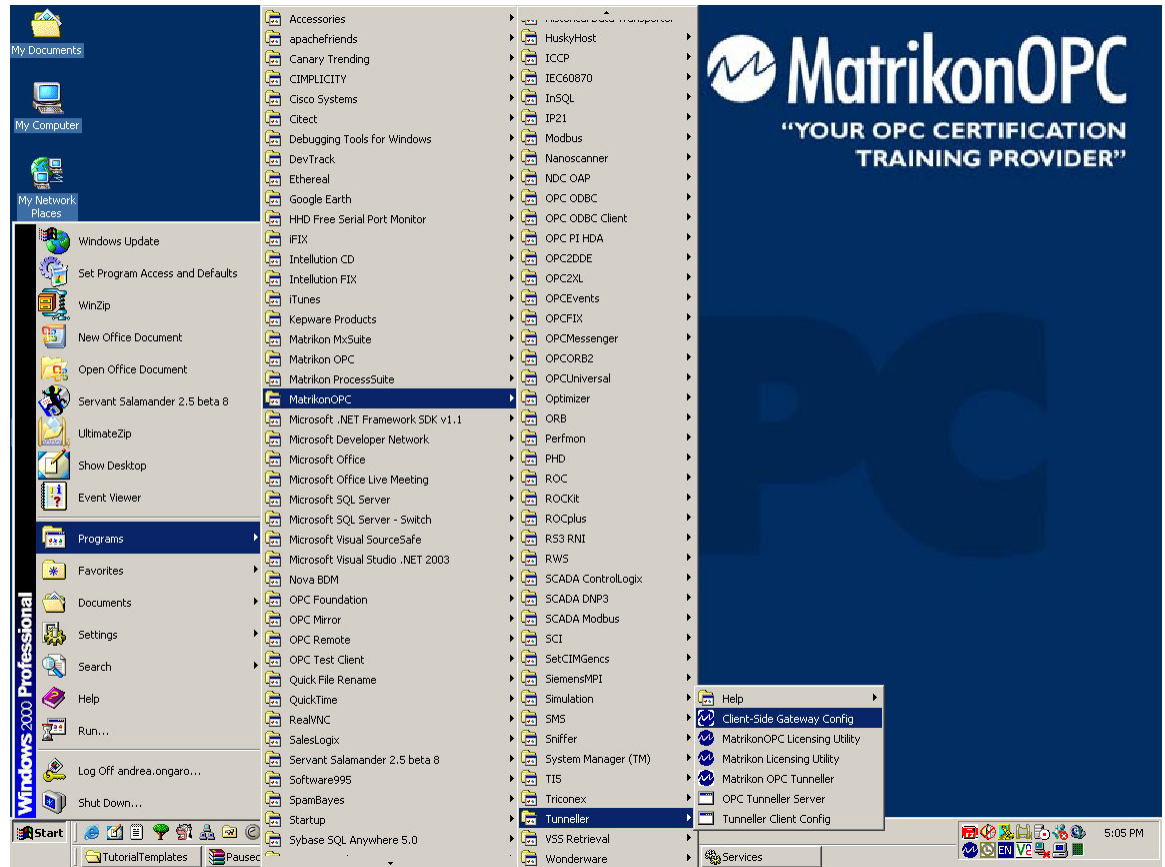
11. Type 'services.msc' and click OK.



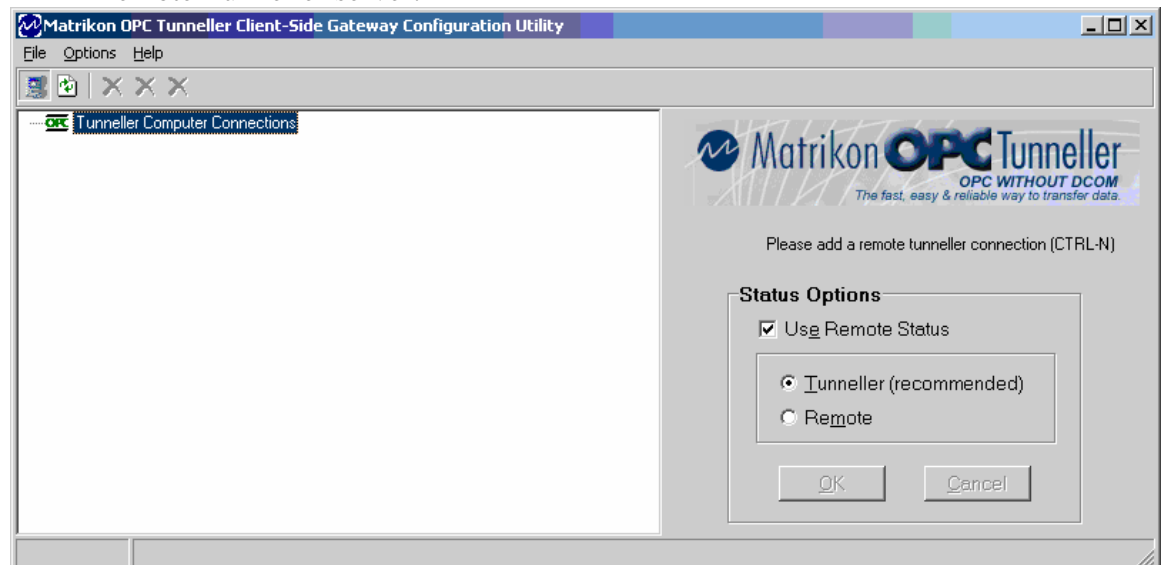
12. If the service called 'MatrikonOPC Tunneller CSC' is Started, your DA client side component is running. If the service called 'MatrikonOPC Tunneller HDA CSC' is running, your HDA client side component is running. Feel free to stop or disable components which you do not require.



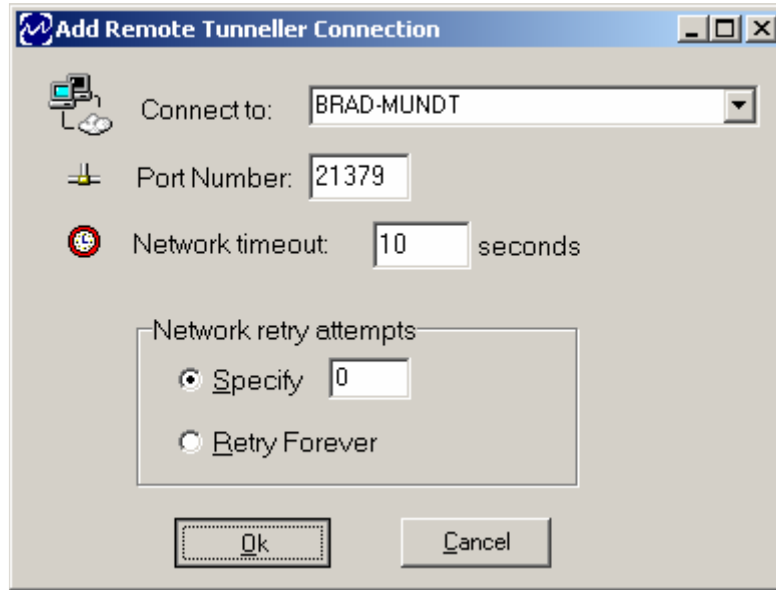
13. To configure the client side component, go to 'Start->Programs->MatrikonOPC->Tunneller->Client-Side Gateway Config'



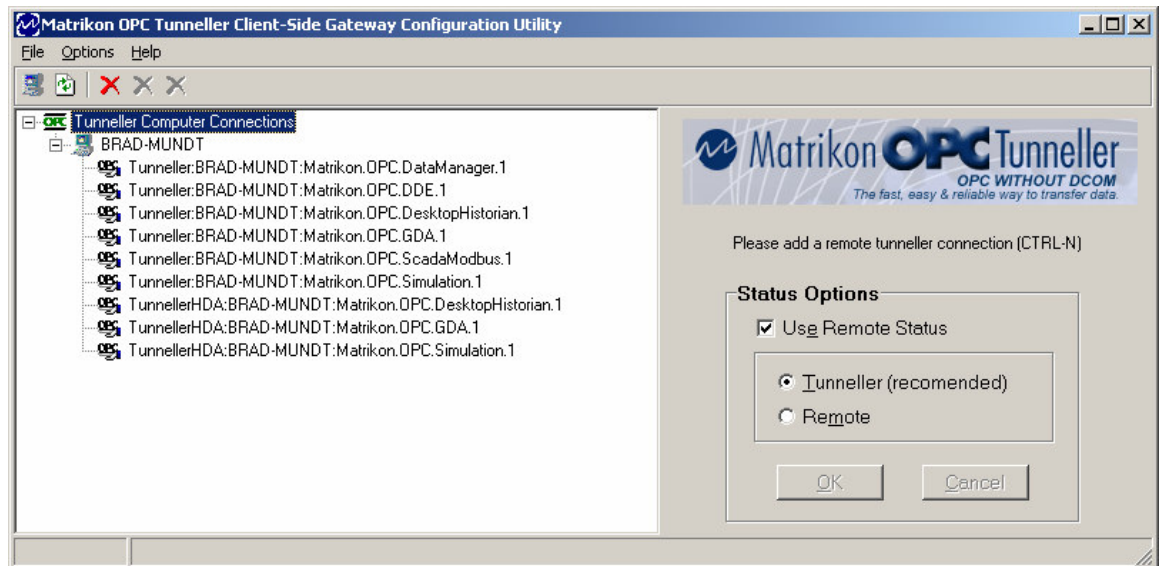
14. Select the Computer icon in the top left hand corner to connect to a remote Tunneller server.



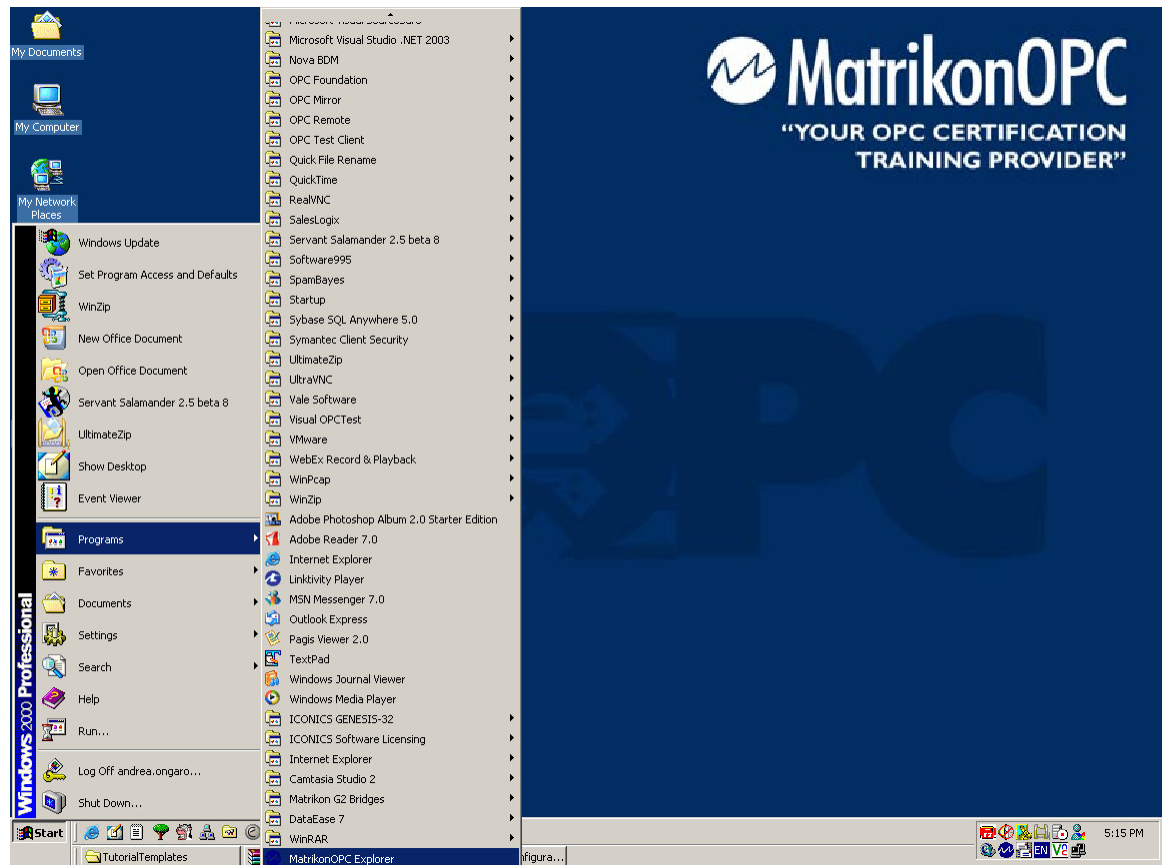
15. Enter the name of the machine you want to connect to, and click OK. The default port for the Tunneller client and server is 21379.



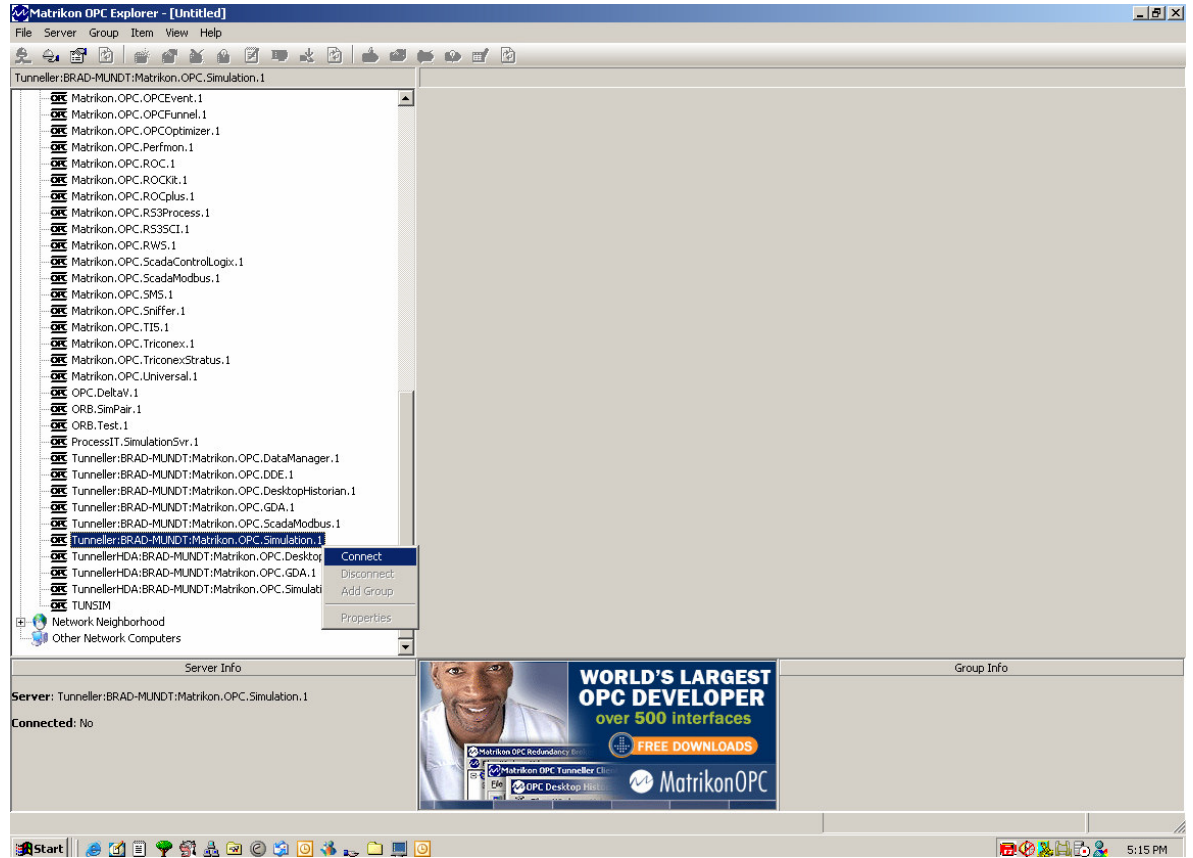
16. Tunneller creates and lists server program IDs by browsing the remote machine. You can now close the configuration utility – the Tunneller Client component is configured.



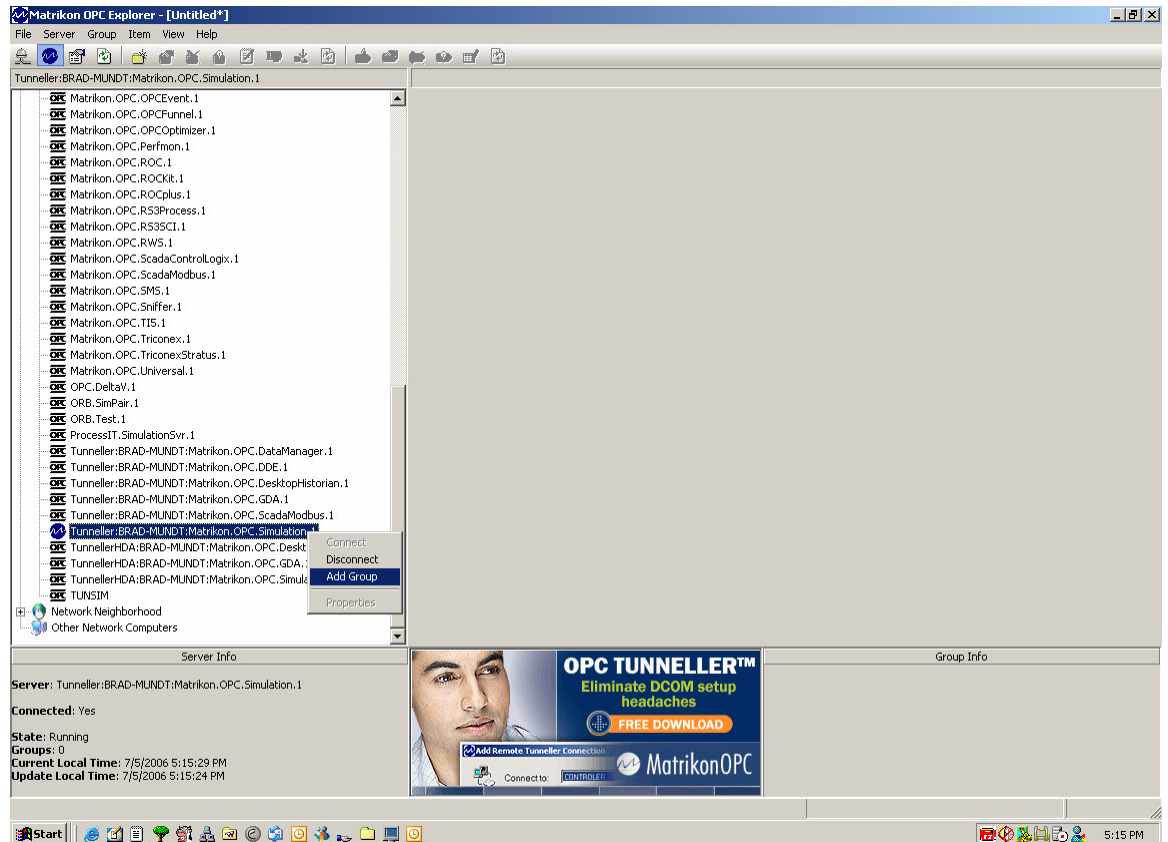
17. Now we will walk through connecting your OPC Client to the Tunneller client, using OPC Explorer as an example. Go to 'Start->Programs->MatrikonOPC Explorer'.



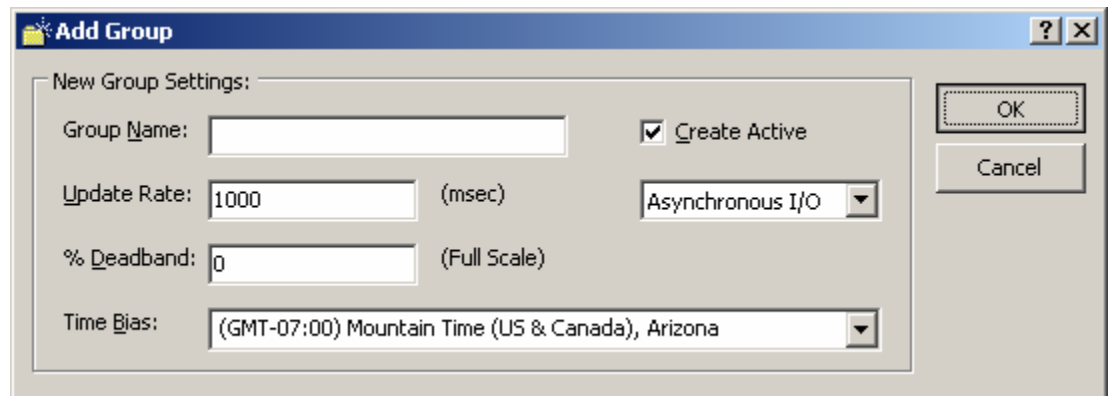
18. Browse to your Tunnelled server, which will appear as 'Tunneller:<Machine Name>:<ServerName>'. Right-click on the server and select 'Connect'. From this point forward you will communicate with your server as though you were connecting directly.



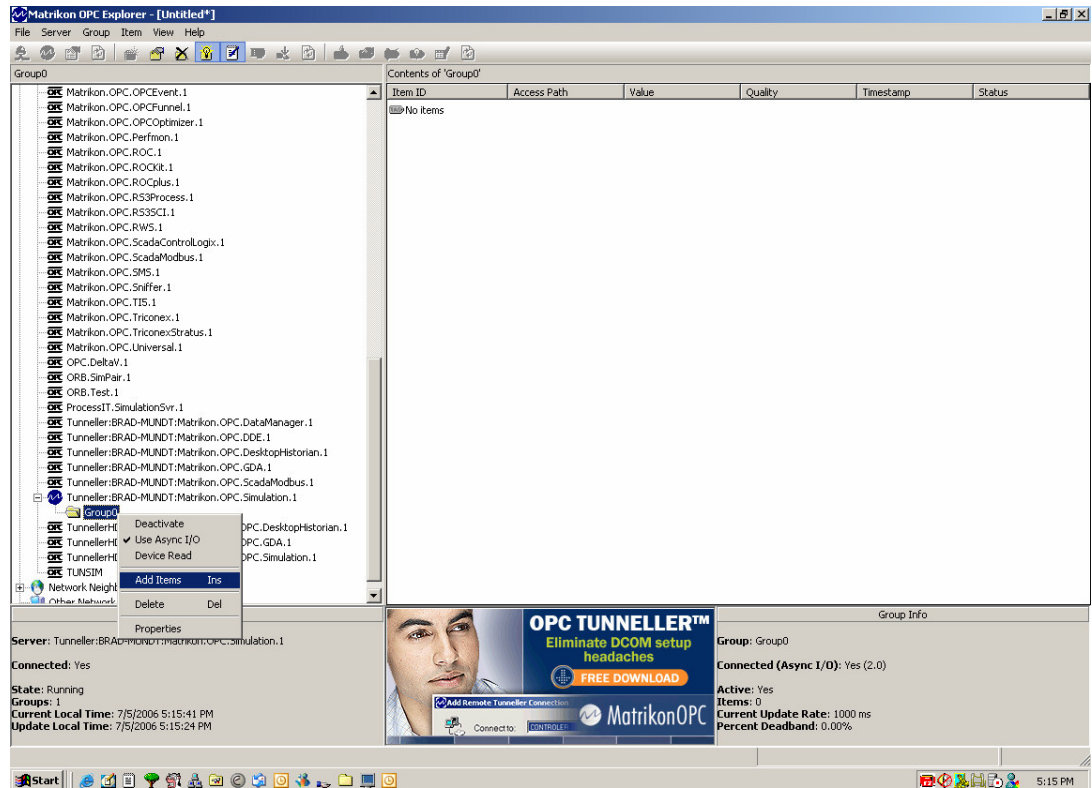
19. Right-click on the connected server and select 'Add Group'.



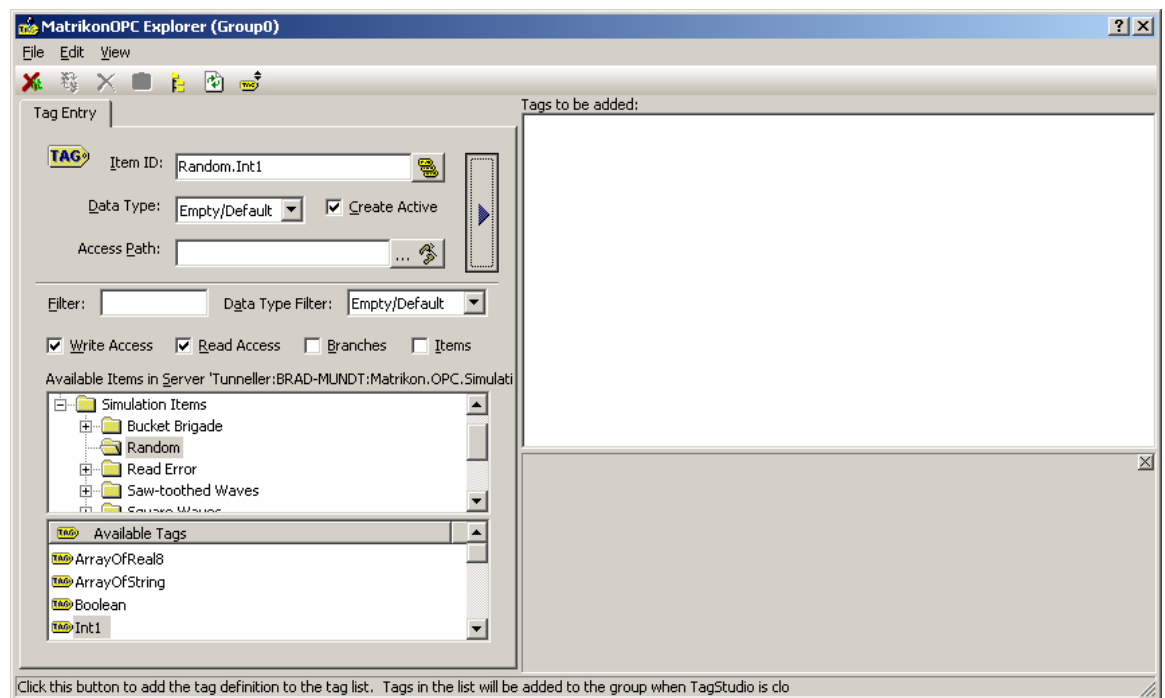
20. It is not necessary to name the group. Click OK.



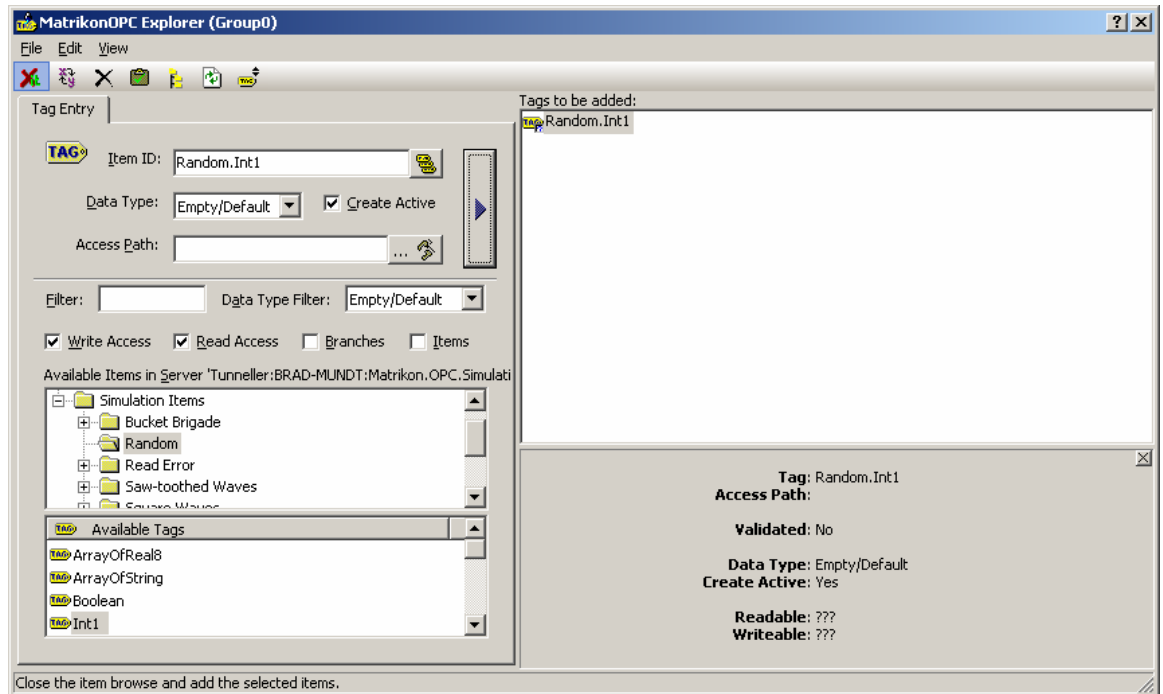
21. Right-click on the newly created group and select 'Add Items'.



22. Browse to your items in the 'Available Items' box. Double click on them to move them to the 'Item ID' field.



23. Click on the blue arrow to move your tags to the 'Tags to be Added' box. Then select the red X in the top left hand corner to close the window and add the tags to the server.



## 24. You are now communicating through OPC Tunneller.

The screenshot displays the Matrikon OPC Explorer application window. The interface is divided into several sections:

- Tree View (Left):** Shows a hierarchy of OPC servers under 'Group0'. The selected server is 'Tunneller:BRAD-MUNDT:Matrikon.OPC.Simulation.1'.
- Contents of 'Group0' (Right):** A table showing the contents of the selected server.

Item ID	Access Path	Value	Quality	Timestamp	Status
Random.Int1		103	Good, non-specific	7/5/2006 5:16:01 PM	Active
- Server Info (Bottom Left):** Provides details for the selected server.

Server: Tunneller:BRAD-MUNDT:Matrikon.OPC.Simulation.1  
Connected: Yes  
State: Running  
Groups: 1  
Current Local Time: 7/5/2006 5:16:02 PM  
Update Local Time: 7/5/2006 5:16:02 PM
- Group Info (Bottom Right):** Provides details for the selected group.

Group: Group0  
Connected (Async I/O): Yes (2.0)  
Active: Yes  
Items: 1  
Current Update Rate: 1000 ms  
Percent Deadband: 0.00%
- Advertisement (Center):** A banner for 'OPC TUNNELLER™' with the text 'Eliminate DCOM setup headaches' and a 'FREE DOWNLOAD' button. It also features a 'Connect to' button and the MatrikonOPC logo.